

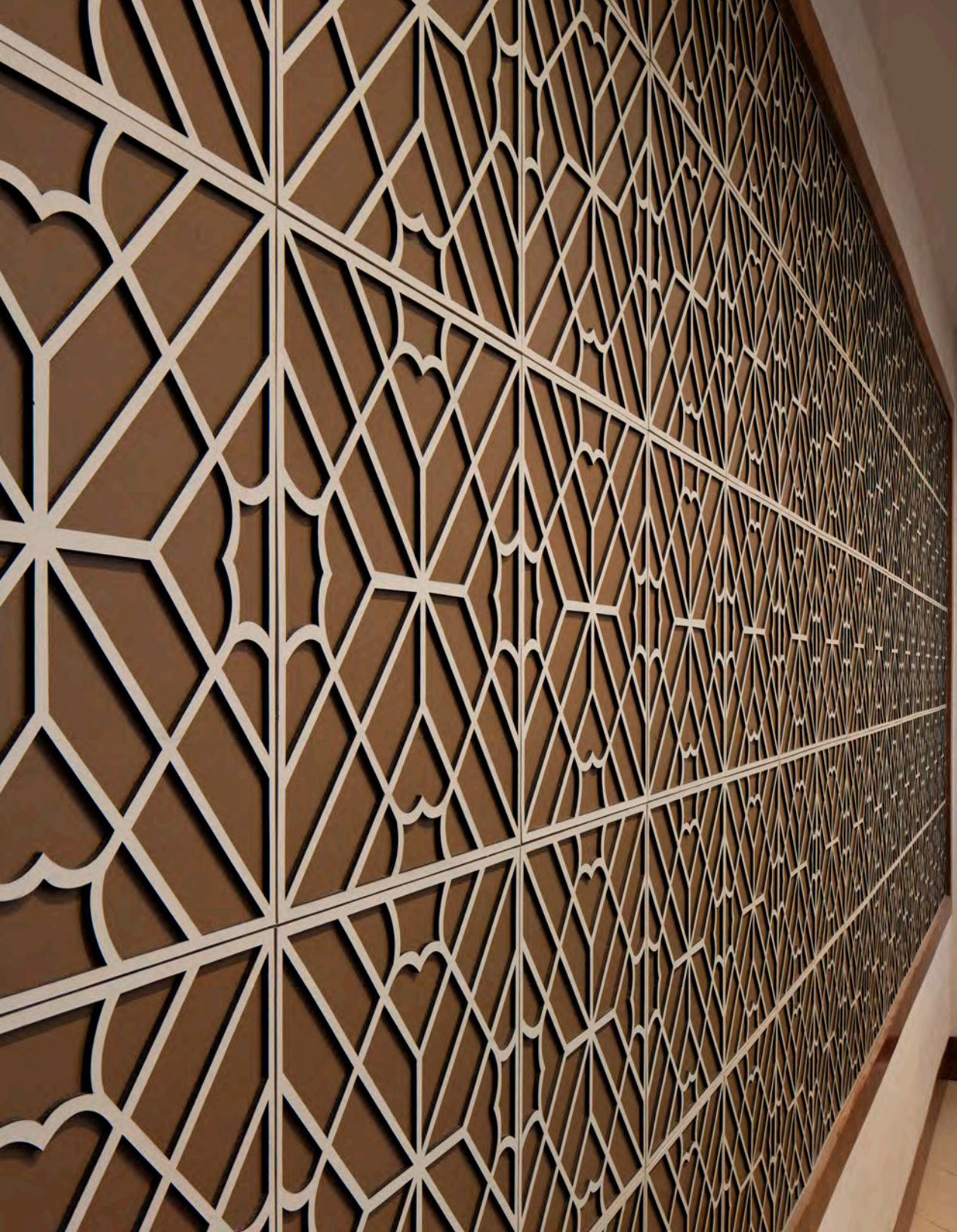


spinneybeck

# Sheraton Palo Alto

Project Profile





# Sheraton Palo Alto

<b>Client</b>	Arcsine Inc.
<b>Location</b>	Palo Alto CA
<b>Product</b>	Maze Layered Tile
<b>Leather Type</b>	Belting Leather (BL)
<b>Leather Colors</b>	BL 1919 Cream + BL 1922 Khaki
<b>Photographer</b>	Misha Bruk

Originally constructed in 1972, Sheraton Palo Alto had become a mixing bowl of varying architectural styles due to a number of later renovations. Arcsine drew inspiration from the building's original 70s architecture and from Silicon Valley's entrepreneurial spirit to retool the aesthetic of the hotel. Inviting residential elements blend with contemporary California-inspired finishes that are at once distinctly Sheraton. Maze Layered Tiles create a focal point in the space, grounding a reception pod with a sophisticated combination of a natural material and graphic patterning. These customizable tiles, made from laser cut Belting Leather, utilize warm khaki leather with cream to emphasize the pattern and depth of the layered tiles.

For more information on the product featured, please visit [spinneybeck.com/maze-layered-tile](https://spinneybeck.com/maze-layered-tile).