

Twist

Wall Panel

spinneybeck

ANDERSON

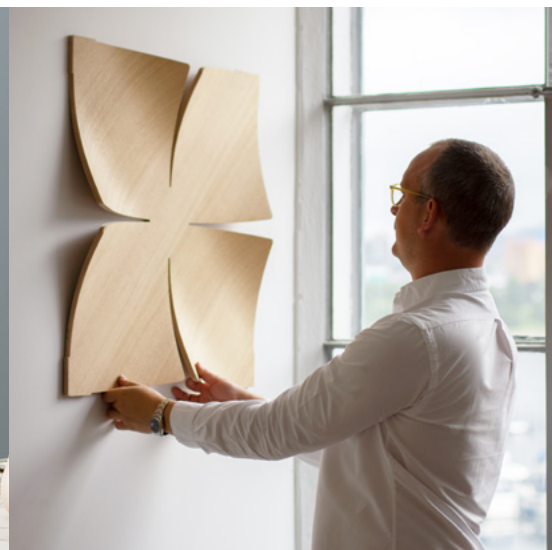
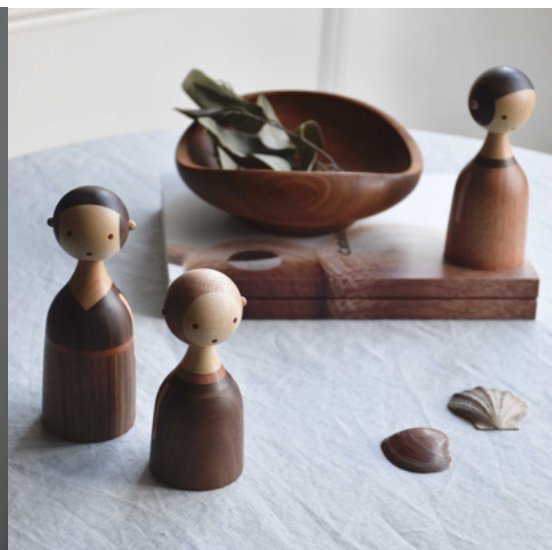


Twist puts a new spin on a classic technique.

Twist stretches and bends wood to an almost impossible form. Installed with minimal hardware that allows the propeller-like panels to seemingly float in front of the wall, an acoustic substrate may be mounted behind these sculptural panels and can be installed on their own to create a dramatic feature wall.

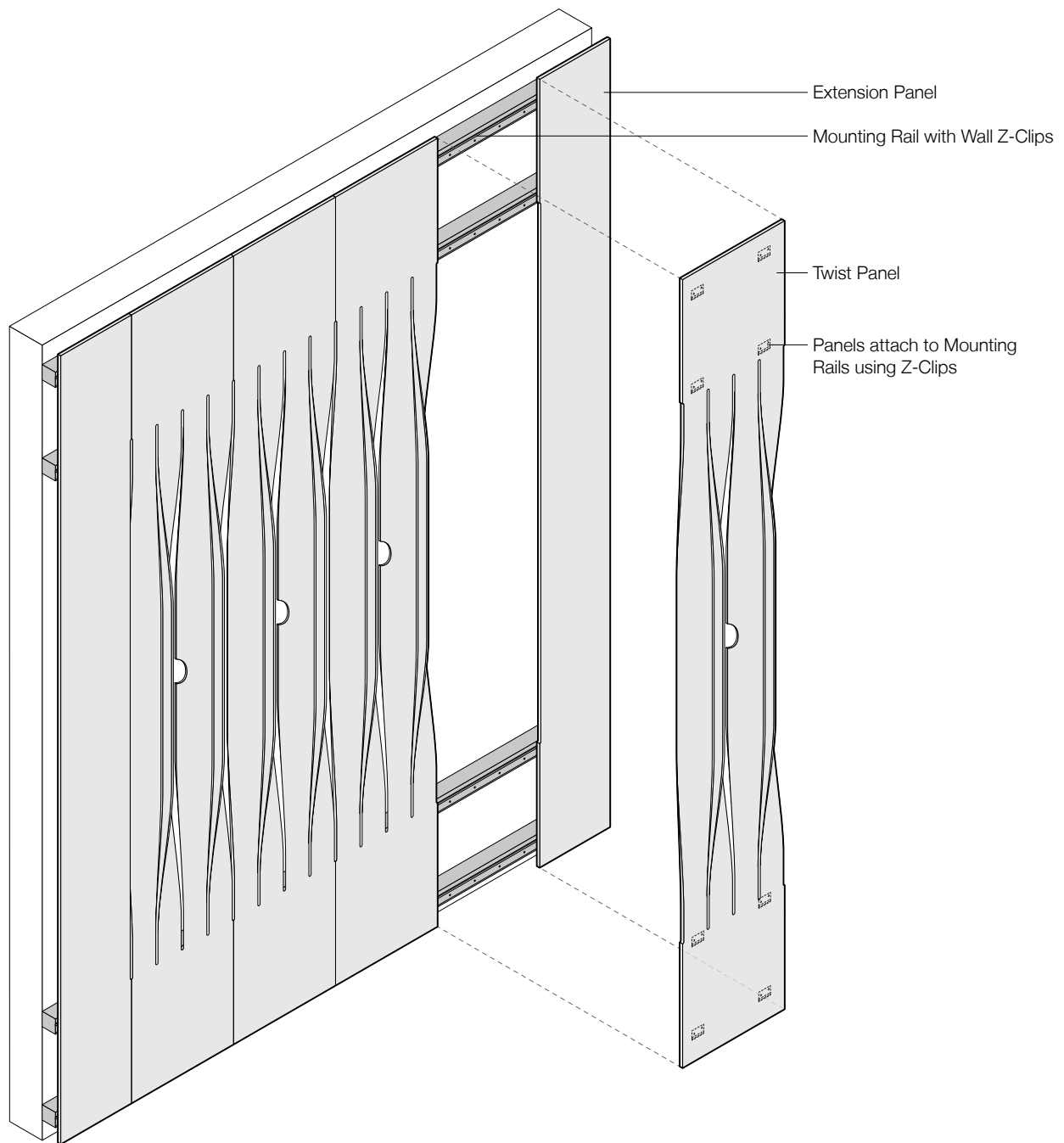
Twist was designed by Lars Beller Fjetland, a Norwegian designer who marries timelessness and longevity through an immediate, honest functionalism in form and aesthetic.



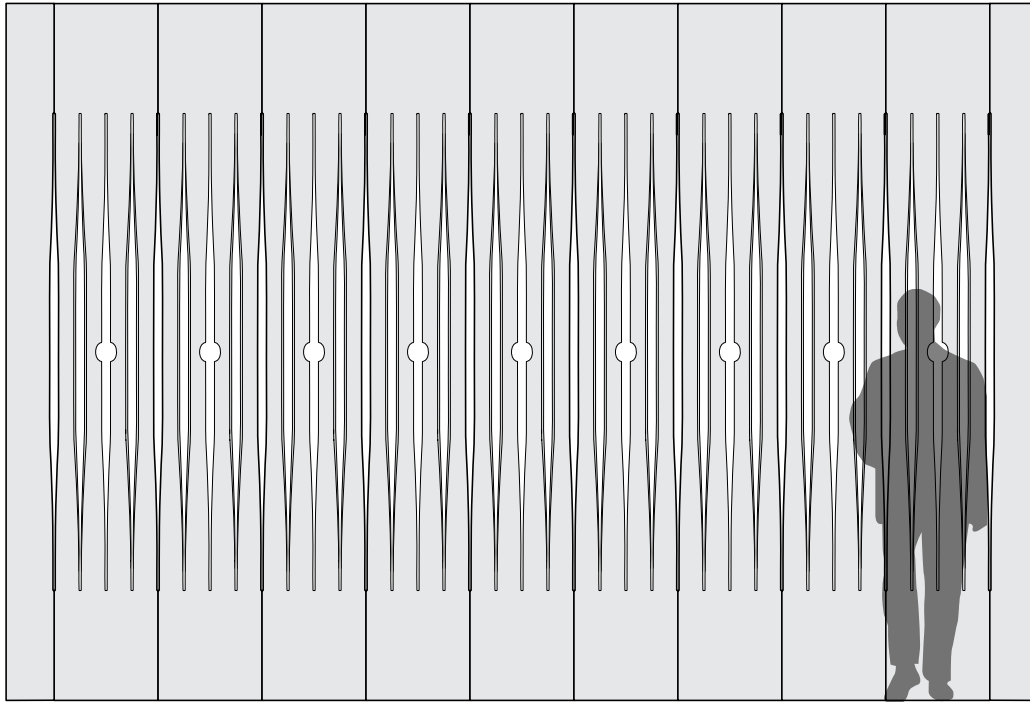


"I strongly believe that it's our responsibility as designers to create products that solve existing problems without creating new ones. This is the only sustainable way of introducing a new product into the market. We need to be thinking about the entire lifecycle of a product, from cradle to grave. This should be the rule, rather than the exception."

– Lars Beller Fjetland, designer of Twist

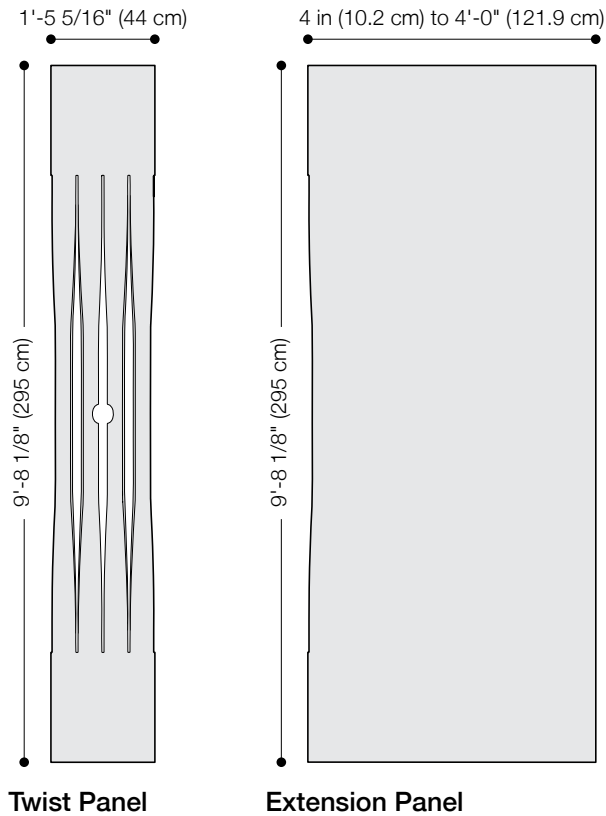


Exploded Axonometric
One Panel in Standard Pattern



Standard Pattern

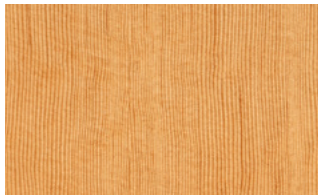
Pattern shown with Optional Extension Panels



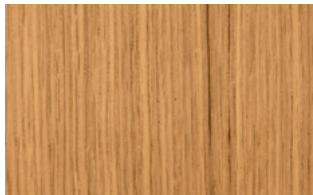
Product	Twist
Designer	Lars Beller Fjetland
Content	Wood Veneer + Baltic Birch Plywood
Panel Size	1'-5 5/16" x 9'-8 1/8" (44 x 295 cm)
Thickness	4 3/8 in (11.1 cm) (includes Z-Clips + mounting rails)
Grain Direction	Vertical
Color Option	1-Color per wall
Edges	Baltic Birch Plywood Finished
Trim Option	Extension Panels
Acoustic Options	Sound-absorbing options are available to install behind Twist panels and must be quoted.
Custom	2-Color+ per wall is available and must be quoted. Veneer covered mounting rail ends available for an upcharge.
Durability	Contract or residential
Lead Time	Made to order and certain lead times will apply
Installation	Panels may be cut down to 7'-4 6/16" (225 cm) in height in the field to suit site conditions and come preinstalled with Z-Clip fasteners. The number of Z-Clips and mounting rails are provided at the spacing required. Additional blocking in wall may be required. Refer to Twist Installation Instructions for complete guidance.
Maintenance	Use a very mild non-abrasive, non-ammonia, and non-alcohol containing soap diluted in a room temperature water solution. Apply with a soft flannel cloth, followed by a dry cloth. Always wipe in the direction of the grain. Never use commercial cleaners, abrasives, solvents, or glass cleaner on any wood components as it will wear away the finish. Never apply wax as this will interact with the finish.
Variation	Wood is a natural material and minor changes in color are evidence of the 100% natural origin of the material
Environmental	Wood Veneer + Baltic Birch Plywood are 100% recyclable Contains no formaldehyde CARB Compliant
Acoustics	For acoustic options, contact Spinneybeck Customer Service
Flammability	ASTM E 84: Class B (Fire Rated)
Standard Colors	



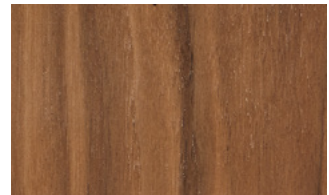
White Pine



Douglas Fir



White Oak



Walnut