

# Quilt

Wall Panel

spinneybeck

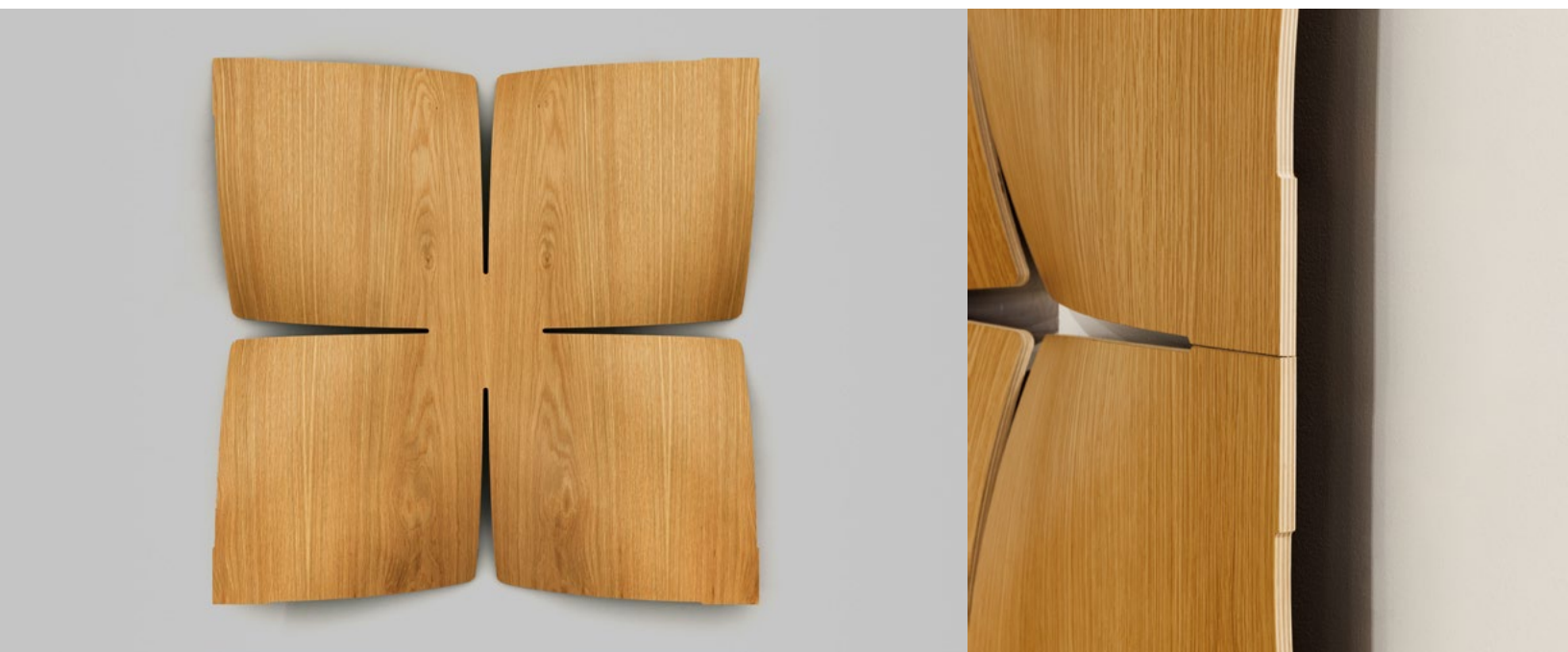
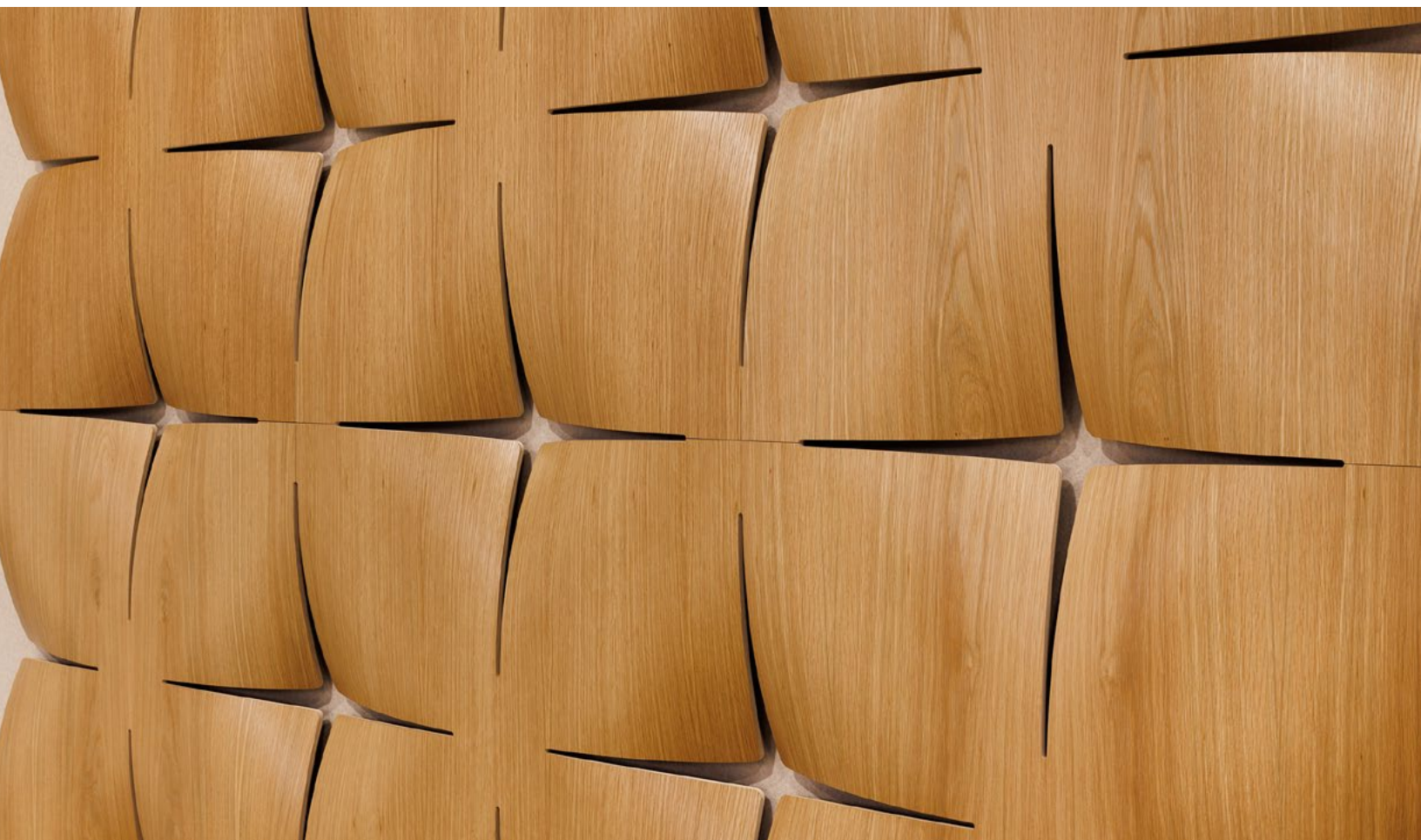




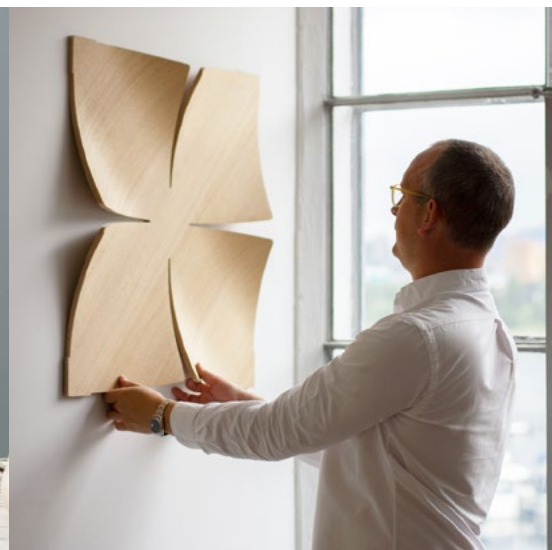
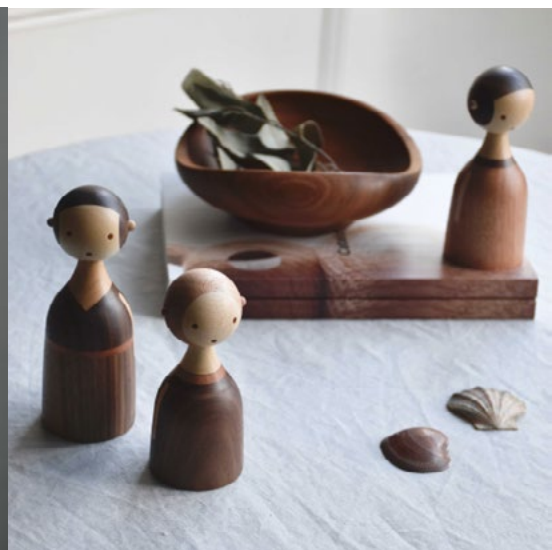
**Quilt adds the  
warmth of wood with  
a tufted twist.**

Inspired by the tufting of fabric, Quilt creates a soft, pillowy effect unexpected in wood. The welcoming panels install with cleverly disguised hardware and modules can be combined to create installations small or large.

Quilt was designed by Lars Beller Fjetland, a Norwegian designer who marries timelessness and longevity through an immediate, honest functionalism in form and aesthetic.

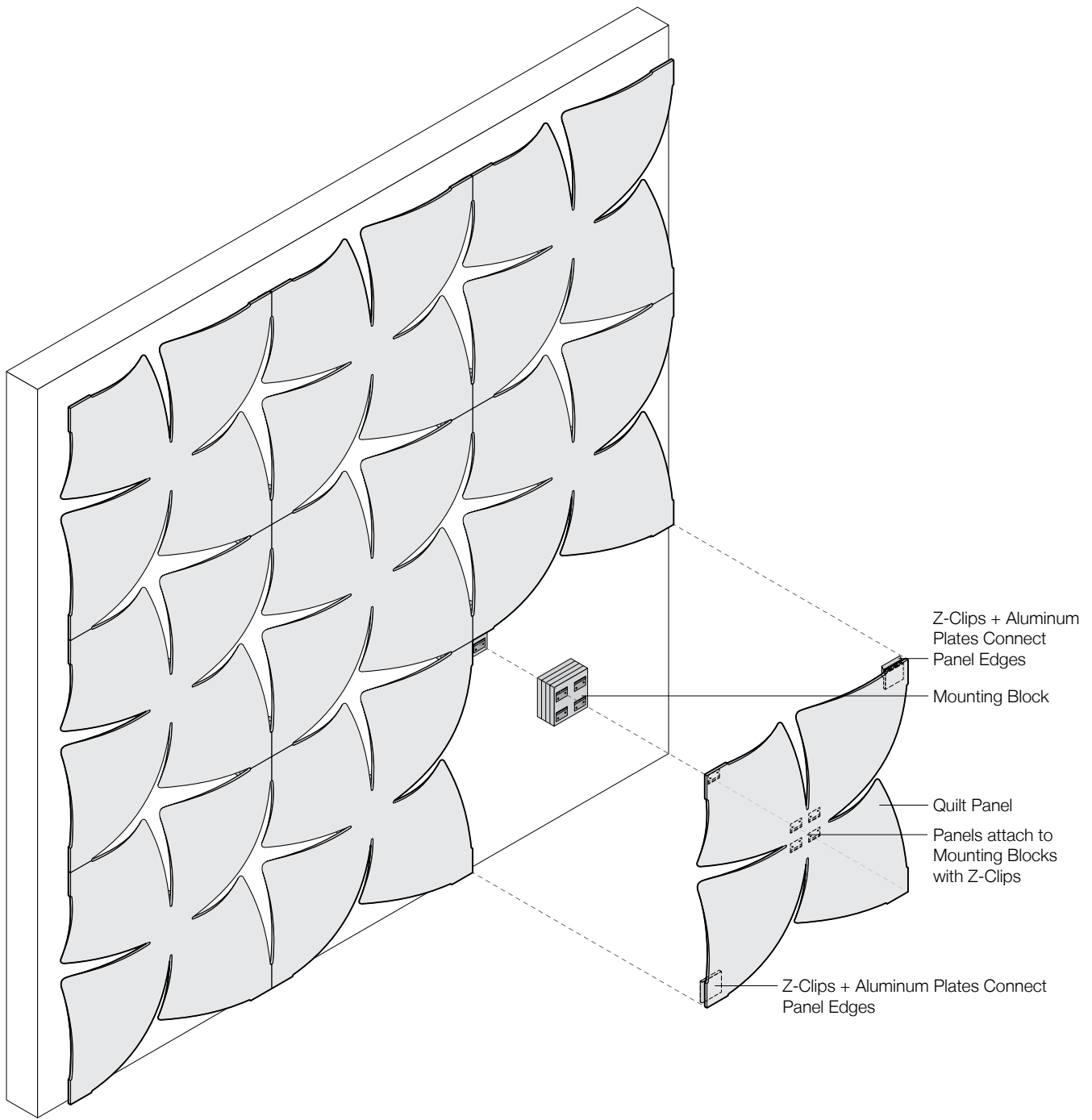




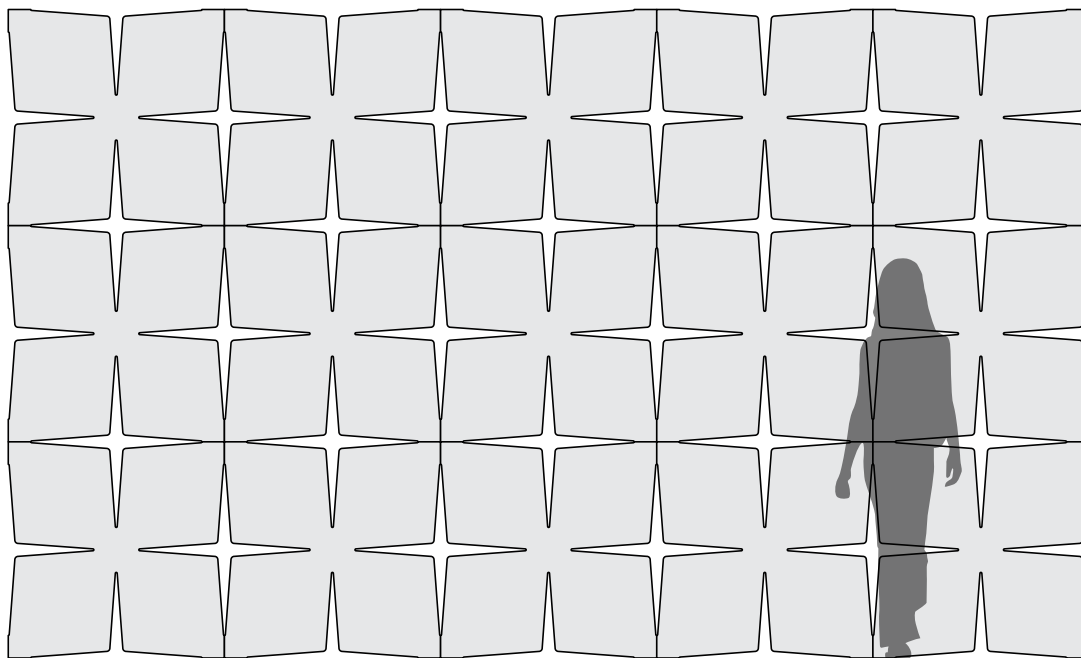


**“I strongly believe that it’s our responsibility as designers to create products that solve existing problems without creating new ones. This is the only sustainable way of introducing a new product into the market. We need to be thinking about the entire lifecycle of a product, from cradle to grave. This should be the rule, rather than the exception.”**

– Lars Beller Fjetland, designer of Quilt

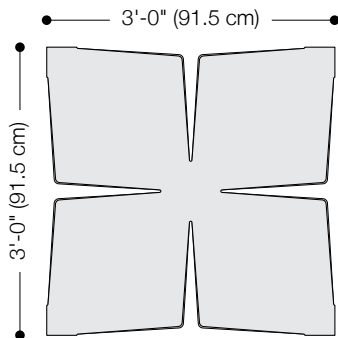


**Exploded Axonometric**  
One Panel in Standard Pattern



### Standard Pattern

One Panel in Standard Pattern



### Quilt Panel

<b>Product</b>	Quilt
<b>Designer</b>	Lars Beller Fjetland
<b>Content</b>	Wood Veneer + Baltic Birch Plywood
<b>Panel Size</b>	3'-0" x 3'-0" (91.5 x 91.5 cm)
<b>Thickness</b>	3 5/8 in (9.3 cm) (includes Z-Clips + mounting blocks)
<b>Grain Direction</b>	Vertical
<b>Color Option</b>	1-Color per wall
<b>Edges</b>	Baltic Birch Plywood Finished
<b>Acoustic Options</b>	Sound-absorbing 3mm Wool Design Felt or 3mm Design Felt + Akustika 10 Substrate may be quoted and installed behind Quilt to provide an effective acoustic solution
<b>Custom</b>	2-Color+ per wall is available and must be quoted
<b>Durability</b>	Contract or residential
<b>Lead Time</b>	Made to order and certain lead times will apply
<b>Installation</b>	Panels come preinstalled with Z-Clip fasteners and secure to mounting blocks provided. Additional blocking at installation site may be required. Refer to Quilt Installation Instructions for complete guidance.
<b>Maintenance</b>	Use a very mild non-abrasive, non-ammonia, and non-alcohol containing soap diluted in a room temperature water solution. Apply with a soft flannel cloth, followed by a dry cloth. Always wipe in the direction of the grain. Never use commercial cleaners, abrasives, solvents, or glass cleaner on any wood components as it will wear away the finish. Never apply wax as this will interact with the finish.
<b>Variation</b>	Wood is a natural material and minor changes in color are evidence of the 100% natural origin of the material
<b>Environmental</b>	Wood Veneer + Baltic Birch Plywood are 100% recyclable Contains no formaldehyde CARB Compliant
<b>Acoustics</b>	For acoustic options, contact Spinneybeck Customer Service
<b>Flammability</b>	ASTM E 84: Class B (Fire Rated)
<b>Standard Colors</b>	



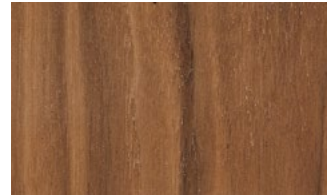
White Pine



Douglas Fir



White Oak



Walnut