

# Porto 3

Acoustic Wall Tile



spinneybeck



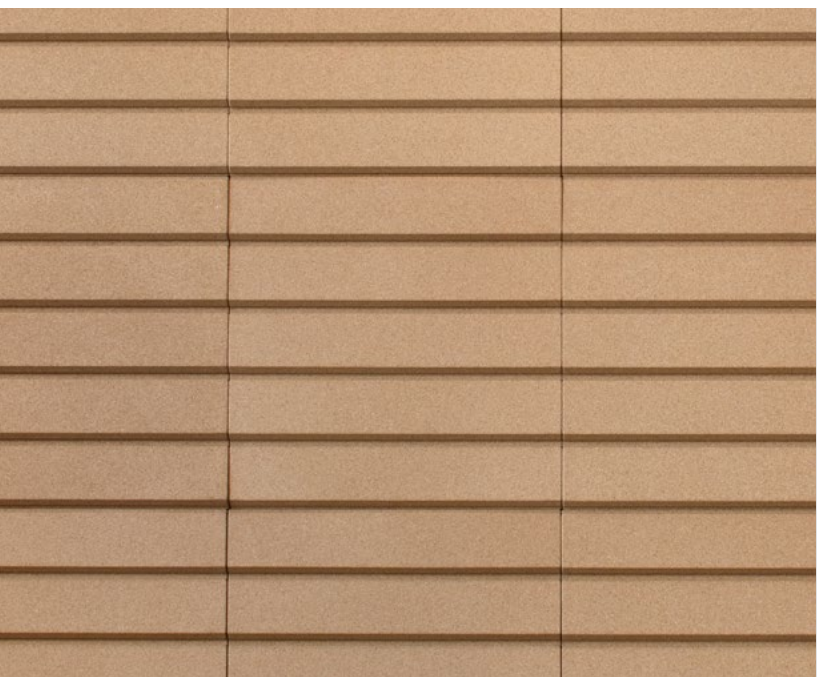


## Porto 3 cuts down on sound (and waste!)

Porto 3 is an acoustically absorptive composite cork wall system composed of 1'-4" (40.6 cm) square tiles produced with waste material from wine stopper production. The resulting product is 93% recycled cork produced in a waste-free moulding process. Named after the Portuguese city known for its cork factories, the design of Porto 3 tiles is inspired by the familiar texture of saw-tooth rooftops on factory buildings. Tiles may be oriented horizontally or vertically to provide sound softening and pattern.

Porto 3 was designed by Lars Beller Fjetland, a Norwegian designer who marries timelessness and longevity through an immediate, honest functionalism in form and aesthetic.



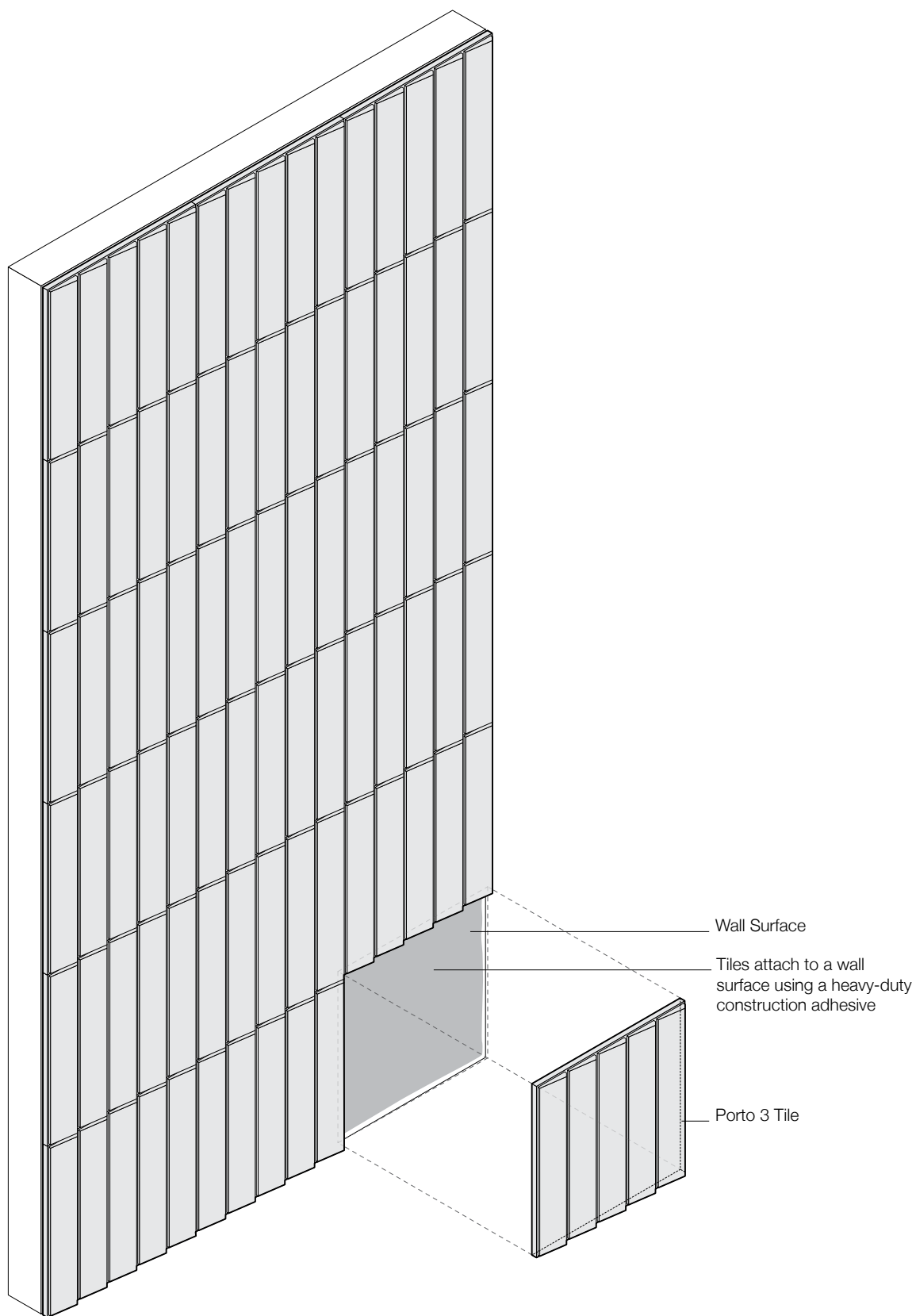




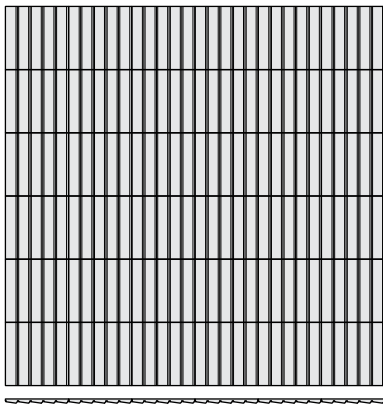


“I strongly believe that it’s our responsibility as designers to create products that solve existing problems without creating new ones. This is the only sustainable way of introducing a new product into the market. We need to be thinking about the entire lifecycle of a product, from cradle to grave. This should be the rule, rather than the exception.”

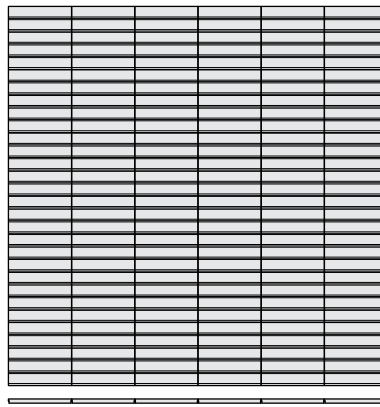
– Lars Beller Fjetland, designer of Porto 3



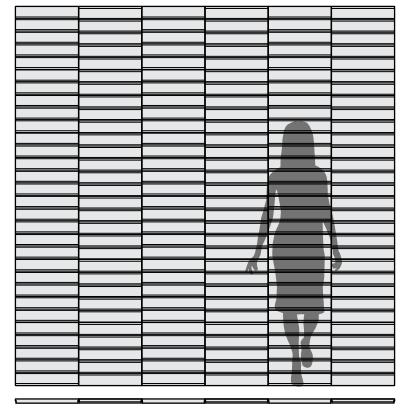
**Exploded Axonometric**



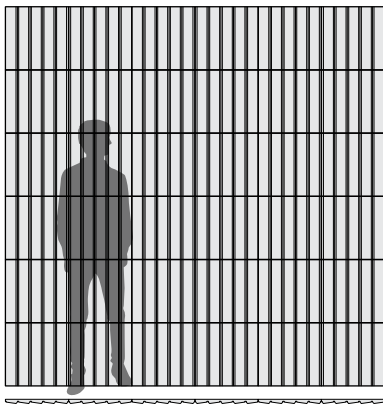
**Pattern 1**



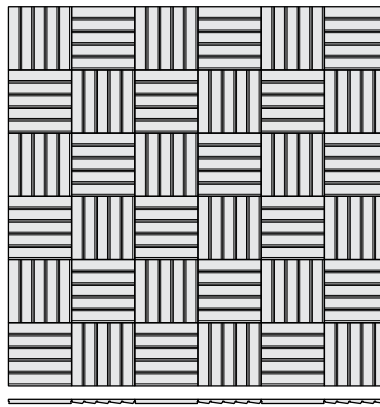
**Pattern 2**



**Pattern 3**



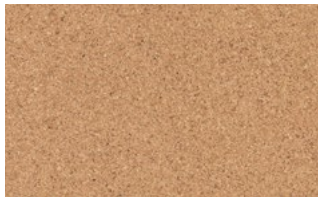
**Pattern 4**



**Pattern 5**

Patterns are shown as suggested installations only—Porto may be specified in any pattern configuration

<b>Product</b>	Porto 3
<b>Designer</b>	Lars Beller Fjetland
<b>Origin</b>	Portugal
<b>Content</b>	93% Recycled Cork + 7% Resin
<b>Tile Size</b>	1'-4" x 1'-4" (40.6 x 40.6 cm)
<b>Thickness</b>	1 in (25.4 mm)
<b>Durability</b>	Contract or residential
<b>Design Tool</b>	A Design Tool is available to assist in the design of Porto tiles. This tool allows patterns to be configured and is available at <a href="https://dt.spinneybeck.com">dt.spinneybeck.com</a> .
<b>Installation</b>	Install in the pattern as specified and attach to a wall surface using a heavy-duty construction adhesive. Tiles may be trimmed to size with a circular saw or miter saw. Refer to Porto Installation Instructions for detailed instructions.
<b>Maintenance</b>	Dust regularly. Spot clean with cloth dampened with water only.
<b>Variation</b>	Cork is a natural material and minor changes in color are evidence of the 100% natural origin of the material.
<b>Environmental</b>	<p>Cork is the bark of the cork oak tree and is 100% natural plant tissue</p> <p>Cork is 100% biodegradable and formaldehyde free</p> <p>Cork contributes to LEED® MR Credit: Building Product Disclosure and Optimization – Sourcing of Raw Materials</p> <p>Porto 3 is comprised of repurposed FSC Certified cork cutoffs from bottle stopper production</p> <p>Porto 3 is 93% post-industrial recycled material and contributes to LEED® MR Credit 4.1-4.2</p>
<b>Acoustics</b>	ASTM C 423: NRC – 0.25, SAA – 0.22
<b>Colorfastness to Light</b>	Class 2–3
<b>Flammability</b>	ASTM E 84: Class B
<b>Standard Color</b>	



Natural Cork