



Overlap Wrap

Leather Handrail

spinneybeck

About

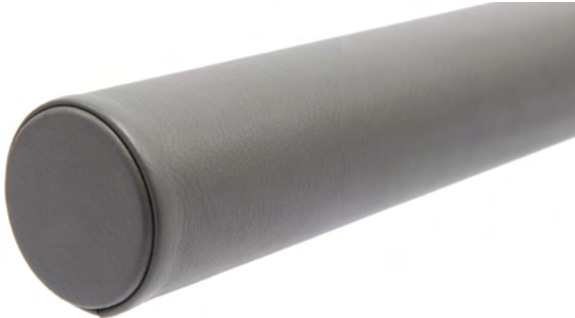


Overlap Wrap Handrails provide a distinctive, bespoke aesthetic for any stair, elevator, and door hardware. Originating in Europe, the craft of wrapping handrails in leather is an art form and the overlap wrap emphasizes the handcraftsmanship of these rails. The leather is cut in 3/4 to 1 in (2 to 2.5 cm) wide strips, shaved, and turned at the edges to allow for overlapping. The leather strips are then adhered to the handrail substrate. Customizable options include substrate material, leather type, and leather or stainless steel end caps.



Customizable Options

End Caps



Leather End Cap



Stainless Steel End Cap

Mounting Brackets



Specifications

Name	Overlap Wrap Handrail
Substrate Options	1 3/4 in (4.5 cm) dia. Aluminum 1 1/4 in (3.2 cm) dia. Stainless Steel 1 3/4 in (4.5 cm) dia. Stainless Steel
Leather Types	AD, AL, AQ, AU, CA, CO, CV, DE, DL, DT, DV, ES, ET, FE, HT, LC, LU, MA, MM, PT, RA, RU, SA, SL, SS, UM, VO, VP, VZ
End Caps	Leather or stainless steel end caps are additional
Mounting Brackets	Stainless steel mounting brackets are additional
Length	Standard pricing applies to straight handrails of 10 lin ft (3 lin m) or more. Shorter lengths and any bends or curves must be quoted.
Maintenance	For finished leathers, wipe with a cool, damp cloth. For tougher soiling, use a pH-balanced soap and rinse. Repeat, if needed. For naked (aniline) leathers, wipe entire surface with a soft cloth and cool water to even out any abrasions or stains. Do not spot rub, for it will darken only that area. Occasional use of Spinneybeck maintenance products is recommended. Other leather cleaners such as saddle soap or household cleaners that may contain harsh chemicals, alcohol or ink removers should never be used.
Lead Time	Made to order and certain lead times will apply
Installation	Handrails should be fabricated off-site by an experienced metal fabricator or fabricated and manufactured by Spinneybeck. Installation services available through Spinneybeck.
Custom	Embossed or perforated leather and curved rails must be quoted
Standard Colors	Refer to Color Book for available colors