

Maremma

Upholstery Leather

spinneybeck



Maremma is an aniline dyed, textured suede.

The premium select hides required to produce Maremma originate from northern Italy and Switzerland. High quality dyes provide excellent lightfastness and allow a greater saturation and the luxurious surface is complemented by the enriched coloration of two dye baths. The sueded surface is protected by an impregnated, soil resistant treatment which shields the surface without disturbing the suppleness and beauty of this fine leather. Maremma offers a price sensitive alternative to the grain sueded leathers.

Product	Maremma (MM)
Content	European cowhide
Origin	Italy
Hide Size	18–22 sq ft (1.7–2.0 sq m)
Thickness	1.2–1.3 mm
Weight	3.0–3.25 oz / sq ft (915–992 g / sq m)
Grain	Full
Grain Texture	Textured sueded
Tannage	Chrome
Dye	Aniline
Finish	Naked, soil resistant
Minimum	Full hide
Primary Uses	Upholstery, handrails, wall panels, architectural applications
Industry	Automotive, contract, hospitality, marine, residential
Maintenance	Textured sueded leather can be maintained with reasonable care as liquids will bead allowing spillage to be blotted up immediately. Brush occasionally with a scouring pad followed by vacuuming to remove dirt and loose fibers. Leather cleaners such as saddle soap or household cleaners that may contain harsh chemicals, alcohol or ink removers should never be used.
Custom	Custom colors not available
Special Services	Perforated available with an upcharge
Variation	Color variation of naked leathers may be more pronounced beyond the normal commercial range. A Cutting for Approval (CFA) is required for all orders.
Colorfastness to Light	Class 2–3
Colorfastness to Crocking	Class 2–3 (dry)
Flammability	CAL 117: Pass CAL 133: Successfully used in CAL 133 applications with Firegard F187 fire backer material or equivalent (flame treated) Cigarette Ignition Resistance NFPA 260: Class 1
Durability + Strength	Abrasion ASTM D 7255: n/a Breaking Force ASTM D 2208: 175 lb Elongation ASTM D 2211: 30–50% at 50 lb Flex ASTM D 2097: n/a Tearing Strength ASTM D 4705: 25 lb

Standard Colors



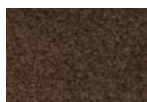
MM 1706



MM 1709



MM 1714



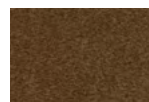
MM 1711



MM 1701



MM 1703



MM 1715



MM 1708



MM BLACK