

A close-up photograph of a textured, olive green leather surface. The leather has a fine, irregular grain pattern. A diagonal crease or fold is visible across the upper portion of the image, creating a sense of depth and highlighting the material's texture. The lighting is soft and even, emphasizing the natural variations in the leather's color and texture.

Lucca

Upholstery Leather

spinneybeck



Lucca is a supple,
velvety suede.

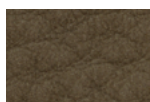
Lucca's suede surface and luxurious suppleness of hand are achieved with an additional fat liquoring process during the retanning phase of production. And unlike our other suede leathers, Lucca is heavier in weight and when combined with a specialized milling process, features an elegant pebble grain surface which is protected with a soil resistant treatment. The dyes used in Lucca provide excellent light fastness properties for a naked leather.

Product	Lucca (LC)
Content	European cowhide
Origin	Italy
Hide Size	55–60 sq ft (5.1–5.6 sq m)
Thickness	1.5–1.6 mm
Weight	3.75–4.0 oz / sq ft (1144–1221 g / sq m)
Grain	Full
Grain Texture	Pebble sueded
Tannage	Chrome
Dye	Aniline
Finish	Naked, soil resistant
Primary Uses	Upholstery, handrails, wall panels, architectural applications
Industry	Contract, hospitality, marine, residential
Maintenance	Smooth sueded leather can be maintained with reasonable care as liquids will bead allowing spillage to be blotted up immediately. Dry brush occasionally and general soiling may be removed with a suede cleaning block. Leather cleaners such as saddle soap or household cleaners that may contain harsh chemicals, alcohol or ink removers should never be used.
Custom	Custom colors not available
Special Services	Flame treatment and perforated available with an upcharge
Variation	Color variation of naked leathers may be more pronounced beyond the normal commercial range. A Cutting for Approval (CFA) is required for all orders.
Colorfastness to Light	Class 2–3
Colorfastness to Crocking	Class 2–3 (dry)
Flammability	CAL 117: Pass CAL 133: Successfully used in CAL 133 applications with Firegard F187 fire backer material or equivalent (flame treated) Cigarette Ignition Resistance NFPA 260: Class 1
Durability + Strength	Abrasion ASTM D 7255: n/a Breaking Force ASTM D 2208: 260 lb Elongation ASTM D 2211: 30–50% at 50 lb Flex ASTM D 2097: n/a Tearing Strength ASTM D 4705: 40 lb

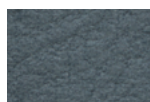
Standard Colors



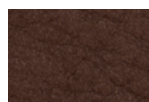
LC 2411



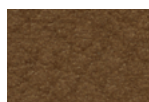
LC 2409



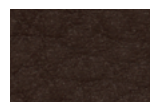
LC 2407



LC 2402



LC 2403



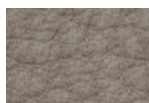
LC 2401



LC 2404



LC 2413



LC 2412



LC 2408



LC BLCK