

A close-up photograph of a hide with a mix of dark brown and light tan hair. The hair is long and fine, creating a dense, textured appearance. The lighting highlights the individual strands, giving it a soft, natural look.

# Haired Hide

Upholstery Leather

spinneybeck



**Haired Hide is authentic and versatile.**

Haired Hide is a cowhide that has been tanned only to soften the hair left intact. Among the color selection is Tri-Color (brown, black, and white) which reveals unique, natural markings that are one-of-a-kind. Haired Hides are versatile as they can be used as upholstery or a sophisticated and natural floor covering option. Each luxurious hide is unique in color, size, and feel.



<b>Product</b>	Haired Hide (HH)
<b>Content</b>	European cowhide
<b>Origin</b>	Italy
<b>Hide Size</b>	45–55 sq ft (4.2–5.1 sq m)
<b>Thickness</b>	1.5–1.6 mm
<b>Weight</b>	3.75–4.0 oz / sq ft (1144–1221 g / sq m)
<b>Grain</b>	Hair intact
<b>Grain Texture</b>	Chrome
<b>Tannage</b>	Full hide
<b>Dye</b>	Upholstery, rugs, architectural applications
<b>Finish</b>	Contract, hospitality, residential
<b>Primary Uses</b>	Upholstery, handrails, wall panels, architectural applications
<b>Industry</b>	Contract, hospitality, marine, residential
<b>General Maintenance</b>	Vacuum regularly with a brush attachment and spot clean with lukewarm water and mild soap. The surface of the haired hide should never be soaked. Leather cleaners such as saddle soap or household cleaners that may contain harsh chemicals, alcohol or ink removers should never be used.
<b>Floor Covering Maintenance</b>	Rotate rug every so often for even wear. To clean up shed hairs, use a broom or vacuum set at maximum height. Maintain with regular dusting and spot cleaning with lukewarm water and mild soap. Other leather cleaners, such as saddle soaps or household cleaners that may contain harsh chemicals, alcohol, or ink removers should never be used.
<b>Custom</b>	Custom colors not available
<b>Variation</b>	Color variation will be more pronounced beyond the normal commercial range. A Cutting for Approval (CFA) is required for all orders.
<b>Colorfastness to Light</b>	Class 2–3
<b>Flammability</b>	CAL 117: Pass CAL 133: Successfully used in CAL 133 applications with Firegard F187 fire backer material or equivalent (flame treated) CFR 16 Part 1630/1631: Pass (flame treated)
<b>Durability + Strength</b>	Breaking Force ASTM D 2208: 200 lb Elongation ASTM D 2211: 30–50% at 50 lb Tearing Strength ASTM D 4705: 25 lb

#### Standard Colors



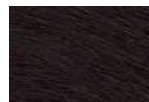
HH 0A12



HH 0CP5



HH 3COL



HH BLCK