



Flat Wrap

Leather Handrail

spinneybeck

About



Leather handrails elevate an overlooked rail to a tactile, distinctive feature. This elegant and durable solution for stairs or elevator and door hardware enhances a space with a handcrafted, bespoke architectural element. Originating in Europe, the craft of wrapping handrails in leather is an art form. The leather is cut, shaved, and wrapped by hand adhering the leather to the handrail substrate. To create a polished, seamless aesthetic, the handrail is stitched on the underside providing a subtle handmade detail and tactile surprise beneath. Customizable options include substrate material and diameter, leather type, stitching style, thread color, and leather or stainless steel end caps.



Customizable Options

Stitching Styles

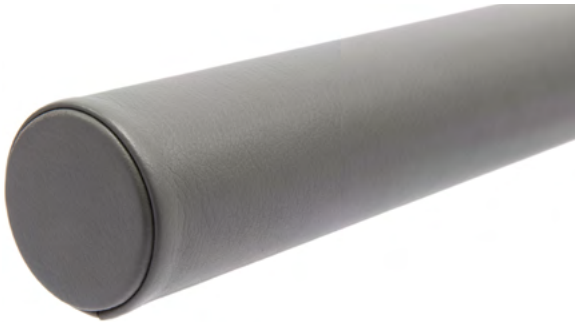


Baseball Stitch



Pinch Stitch

End Caps



Leather End Cap



Stainless Steel End Cap

Mounting Brackets



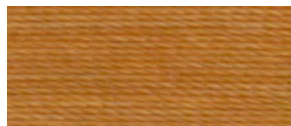
Specifications

Name	Flat Wrap Handrail
Substrate Options	1 3/4 in (4.5 cm) dia. Aluminum 1 1/4 in (3.2 cm) dia. Stainless Steel 1 3/4 in (4.5 cm) dia. Stainless Steel
Leather Types	AD, AL, AQ, AU, CA, CO, CV, DE, DL, DT, DV, ES, ET, FE, HT, LC, LU, MA, MM, PT, RA, RU, SA, SL, SS, UM, VO, VP, VZ
Stitching Options	Baseball or Pinch
Stitching Content	Bonded Nylon
End Caps	Leather or stainless steel end caps are additional
Mounting Brackets	Stainless steel mounting brackets are additional
Length	Standard pricing applies to straight handrails of 10 lin ft (3 lin m) or more. Shorter lengths and any bends or curves must be quoted.
Maintenance	For finished leathers, wipe with a cool, damp cloth. For tougher soiling, use a pH-balanced soap and rinse. Repeat, if needed. For naked (aniline) leathers, wipe entire surface with a soft cloth and cool water to even out any abrasions or stains. Do not spot rub, for it will darken only that area. Occasional use of Spinneybeck maintenance products is recommended. Other leather cleaners such as saddle soap or household cleaners that may contain harsh chemicals, alcohol or ink removers should never be used.
Lead Time	Made to order and certain lead times will apply
Installation	Handrails should be fabricated off-site by an experienced metal fabricator or fabricated and manufactured by Spinneybeck. Installation services available through Spinneybeck.
Custom	Embossed or perforated leather and curved rails must be quoted
Standard Leather Colors	Refer to Color Book for available colors

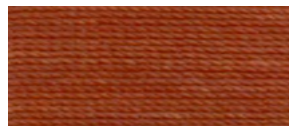
Standard Thread Colors



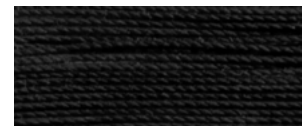
32127 Light Yellow



32608 Gold



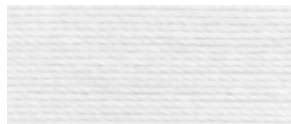
32799 Copper



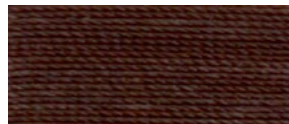
34132 Black



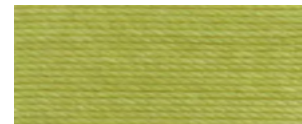
45968 Tan



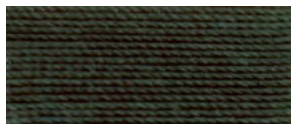
500277 White



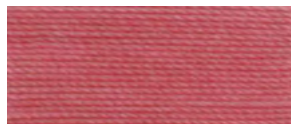
56450 Brown



56455 Bright Green



56463 Dark Green



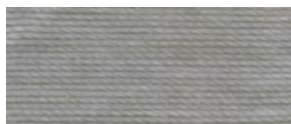
56500 Pink



56465 Dark Red



56470 Bright Red



609478 Grey