

Embossed

Upholstery Leather

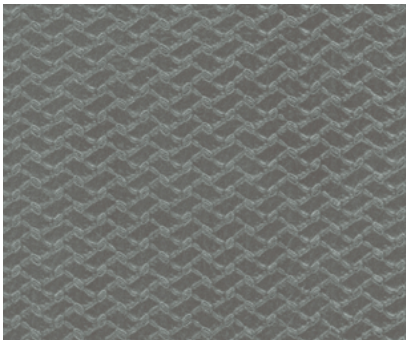
spinneybeck



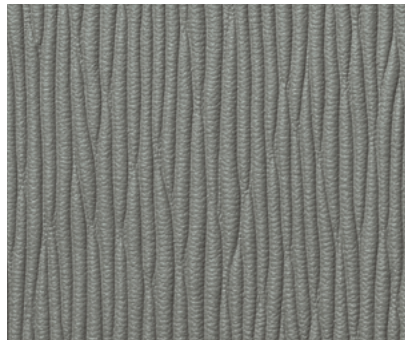
Embossed is positively patterned leather.

Embossing is the process of creating a raised relief design. With the addition of an embossed pattern, leather can be transformed into a truly unique product for upholstery and architectural applications. Available in styles inspired by nature, old world tooling, weaving, and geometrics, Embossed is recommended in a selection of Spinneybeck leathers that best accept and retain the embossing designs.

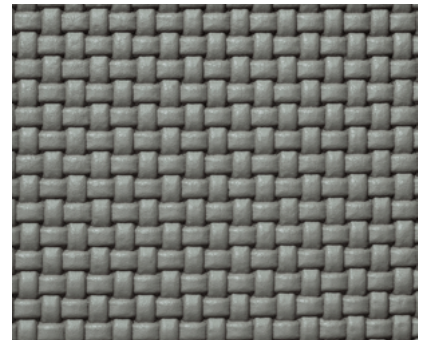
The minimum order for the embossing process is one half hide and pricing is based on hide size. The usable area is generally 24 x 52 in (60.96 x 132.8 cm) and match lines are often visible. Please confirm all pattern sizes with Spinneybeck Customer Service prior to placing an order.



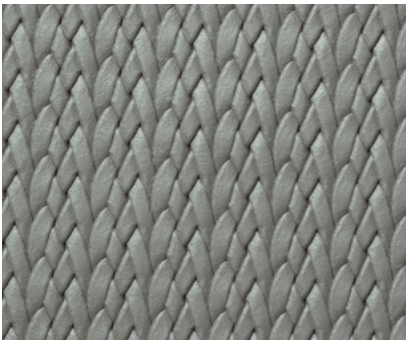
Basket Weave 5565



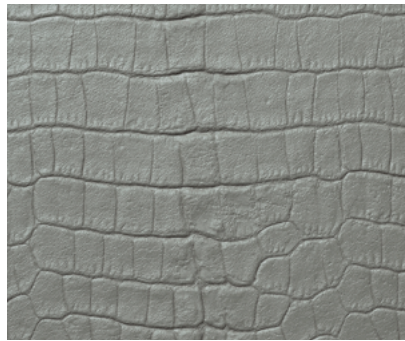
Cobra



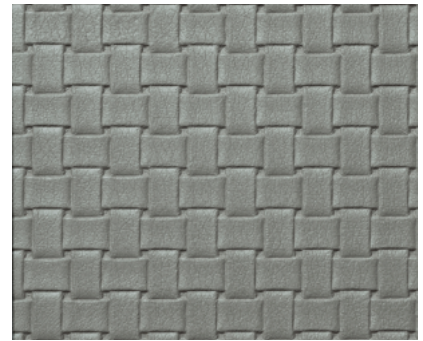
Deep Small Weave



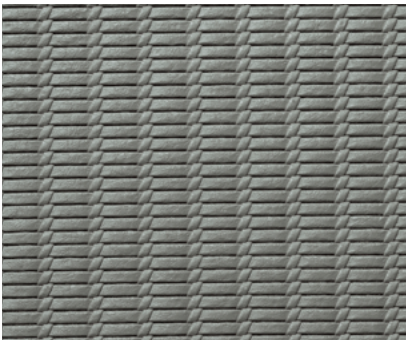
Dream Weave



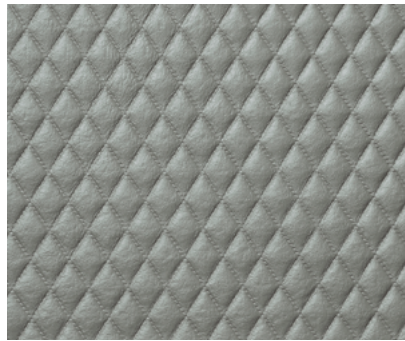
Empire Alligator



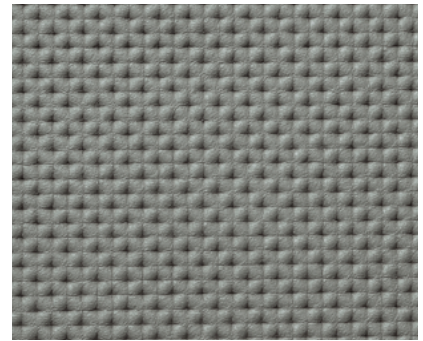
Large Weave



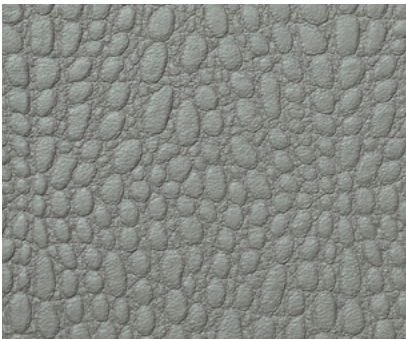
Milano Weave



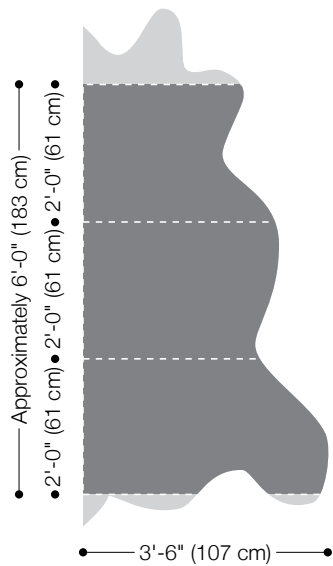
Quilty Diamond



Rosette



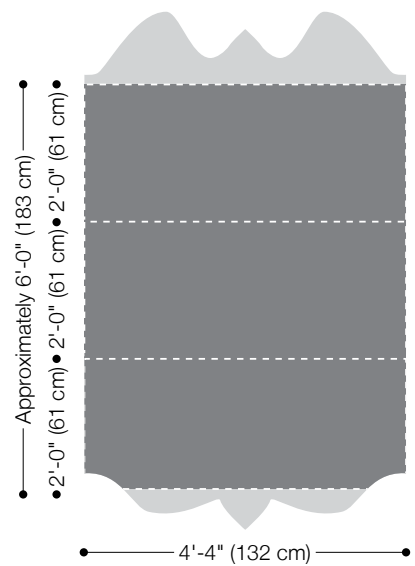
Small Baby Gator



Pattern Placement Option 1
Half hide with horizontal placement



Pattern Placement Option 2
Half hide with vertical placement



Pattern Placement Option 3
Full hide center with horizontal placement

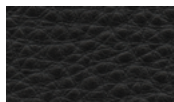
| | |
|--------------------------------|--|
| Product | Embossed (EM) |
| Content | European cowhide |
| Origin | Italy |
| Hide Size | Varies by leather |
| Approximate Usable Area | 24 x 52 in (61 x 132.8 cm) |
| Thickness | Varies by leather |
| Weight | Varies by leather |
| Minimum | Half hide |
| Primary Uses | Varies by leather |
| Industry | Automotive, contract, hospitality, marine, residential |
| Maintenance | For finished leathers, wipe with a cool, damp cloth. For tougher soiling, use a pH-balanced soap such as Dawn with a 1:10 ratio of soap to water and rinse. Repeat, if needed. Occasional use of Spinneybeck Finished Leather Cleaner, Conditioner & Protector is recommended. For naked (aniline) leathers, wipe entire surface with a soft cloth and cool water to even out any abrasions or stains. Do not spot rub, for it will darken only that area. Occasional use of Spinneybeck Aniline Leather Cleaner, Conditioner & Protector is recommended. Other leather cleaners such as saddle soap or household cleaners that may contain harsh chemicals, alcohol or ink removers should never be used. |
| Custom | Additional embossing patterns available. An upcharge per custom sample will apply and be reimbursed upon order placement. |
| Sampling | Samples are only available in Forte (FE), Lucente (LU), or Saddle (SL) |
| Standard Leathers | Available in full color range of each leather below—refer to Color Book or spinneybeck.com/colorbook for complete color selection. (Swatches shown to indicate grain texture only.) |



Belting Leather (BL)



Cascia (CA)



Derby (DE)



Distressed (DT)



Forte (FE)



Hand Tipped (HT)



Lucente (LU)



Saddle (SL)