

Distressed

Upholstery Leather

spinneybeck

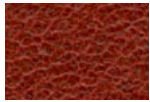


Distressed looks beautifully lived in.

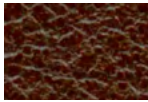
Distressed embodies the ease and comfort of a well-worn, natural leather. This full grain, aniline dyed leather is produced from a premium selection of raw material from southern Germany and the distressed appearance is achieved by combining natural oils with a specialized milling process. Distressed features a rich vegetable retannage to create a smooth tight grain and a final ironing process produces a subtle sheen. The vegetable tannage and natural oils form a fine patina over time.

Product	Distressed (DT)
Content	European cowhide
Origin	Italy
Hide Size	55–60 sq ft (5.1–5.6 sq m)
Thickness	1.1–1.3 mm
Weight	2.75–3.25 oz / sq ft (839–992 g / sq m)
Grain	Full
Grain Texture	Smooth, tight
Tannage	Combination
Dye	Aniline
Finish	Light
Primary Uses	Upholstery, handrails, wall panels, architectural applications
Industry	Contract, hospitality, marine, residential
Maintenance	Wipe entire surface with a soft cloth and cool water to even out any abrasions or stains. Do not spot rub, for it will darken only that area. Occasional use of water-based leather cleaner, conditioner, and protector is recommended. Other leather cleaners such as saddle soap or household cleaners that may contain harsh chemicals, alcohol or ink removers should never be used.
Custom	Custom colors not available
Special Services	Perforated and embossed available with an upcharge
Colorfastness to Light	Class 2–3
Colorfastness to Crocking	Class 2–3 (dry)
Durability + Strength	Abrasion ASTM D 7255: n/a Breaking Force ASTM D 2208: 200 lb Elongation ASTM D 2211: 30–50% at 50 lb Flex ASTM D 2097: n/a Tearing Strength ASTM D 4705: 25 lb

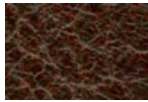
Standard Colors



DT 0062



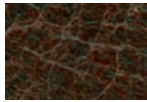
DT 0068



DT 0069



DT 0087



DT 0065



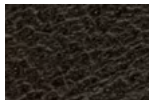
DT 0071



DT 0066



DT 0060



DT BLACK