

# Design 5 with Hardware Installation Instructions

## Design 5

These installation recommendations consist of common-sense practices for installing baffles and similar products. Installers should rely upon their own professional experience and understanding of their unique requirements to be the best guide to a successful installation.

### Tools Needed

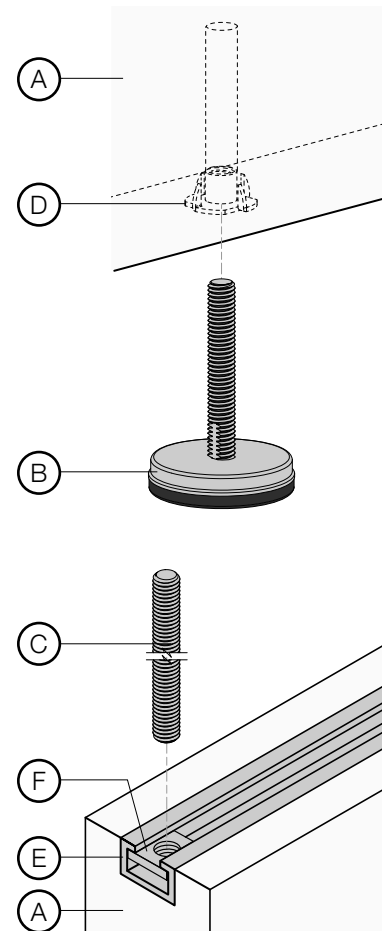
Ladder  
Laser or string level

### Components

- A** Panels(s) with preinstalled Tee Nuts (D) on bottom and C-Channel (E) with Square Nuts (F) on top (as ordered)
- B** (2) 2" Diameter Leveling Foot per panel (as ordered)
- C** (2) 3/8"-16 x 3'-0" (91.4 cm) lengths of Suspension Rod per panel (as ordered)

### Installation Instructions

- 1** Inspect the panels. In the case of product defect or damage in transit, Spinneybeck must be notified within five (5) business days. Spinneybeck cannot accept a return or warranty claim on any product that has been installed.
- 2** Each panel includes two (2) Tee Nuts (D) embedded into the bottom of each panel. Screw one Leveling Foot (B) into each Tee Nut (D) to the desired height from floor.
- 3** Each panel includes a C-Channel (E) in the top with two Square Nuts (F)—one (1) for each suspension point.
- 4** Screw a Suspension Rod (C) into each Square Nut (E) and slide to appropriate suspension point position. To lock the rod in position, twist the rod into the nut until it locks in position and no longer slides freely.  
  
Note: Recommended position for Suspension Rod (C) is 6 1/4" (16.4 cm) from panel edge to align with Leveling Foot (B) position.
- 6** The Suspension Rods (C) are 3/8"-16 in diameter and should be secured to the ceiling or other support using an appropriate method as determined by installer and based on site conditions.
- 7** The panels should be leveled and adjusted using a laser or string level. Adjust the Suspension Rod (C) length as needed at the ceiling attachment point.
- 8** Adjust each Leveling Foot (B) as needed at the floor. The Leveling Feet should rest securely on the floor to stabilize the panel.
- 9** Install remaining panels following the previous steps.



### Cleaning Instructions

Use a very mild non-abrasive, non-ammonia and non-alcohol containing soap diluted in a room temperature water solution. Apply with a soft flannel cloth, followed by a dry cloth. Always wipe in the direction of the grain. Never use commercial cleaners, abrasives, solvents or glass cleaner on any wood components as it will wear away the finish. Never apply wax as this will interact with the finish.

For complete instructions, refer to the Product Maintenance + Cleaning Guide at [spinneybeck.com/cleaning-guide](http://spinneybeck.com/cleaning-guide).