

Belting Leather

Architectural Product

spinneybeck

About



Belting Leather is a heavy weight, full grain leather that was originally developed during the Industrial Revolution to drive pulley belts and other machinery. With its thick, firm feel, this leather is 100 percent vegetable tanned and aniline dyed. The smooth, tight grain character is created from a unique blend of mimosa and chestnut and a premium selection of European raw material. Belting Leather is processed in Santa Croce, a region of Italy with a strong heritage of producing some of the finest quality vegetable tanned leathers.



Protected by a light water resistant finish, Belting Leather is suitable for a variety of applications. It can be used as an inlay on desks and tables or as straps and seat pads on custom furniture. The pliability of the product allows it to be woven, wrapped around columns, or applied to walls. Belting leather can also be custom cut, debossed, laser engraved, and layered to create decorative patterning.



About



Specifications

Name	Belting Leather (BL)
Content	European cowhide
Origin	Italy
Hide Size	18–22 ft ² (1.7–2.0 m ²)
Thickness	2.8–3.2 mm
Weight	7.0–8.0 oz / ft ² (2136–2441 g / m ²)
Grain	Full
Grain Texture	Smooth, tight
Tannage	Vegetable
Dye	Aniline
Finish	Light
Minimum	Full hide
Primary Uses	Furniture strapping, surface inlay, wall applications
Industry	Aviation, contract, hospitality, marine, residential
Maintenance	Wipe entire surface with a soft cloth and cool water to even out any abrasions or stains. Do not spot rub, for it will darken only that area. Occasional use of Spinneybeck Aniline Leather Cleaner, Conditioner & Protector or Aniline Leather Maintenance Kit is recommended. Other leather cleaners such as saddle soap or household cleaners that may contain harsh chemicals, alcohol or ink removers should never be used.
Custom	Custom colors available
Special Services	Die or lasercut, debossed, laser engraved, perforated, and embossed available with an upcharge
Colorfastness to Light	Class 2–3
Colorfastness to Crocking	Class 4–5 (dry), Class 4 (wet)
Flammability	ASTM E 84: Class B Boston Fire Dept BFD IX-1: Pass CAL 117: Pass
Durability + Strength	Breaking Force ASTM D 2208: 500+ lb Elongation ASTM D 2211: 0–10% at 50 lb

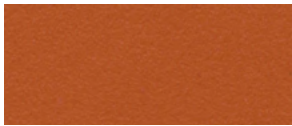
Standard Colors



BL 1905



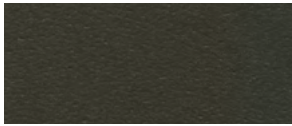
BL 1906



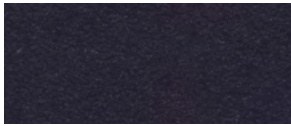
BL 1907



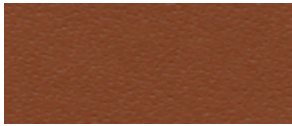
BL 1910



BL 1911



BL 1913



BL 1904



BL 1924



BL 1903



BL 1922



BL 1921



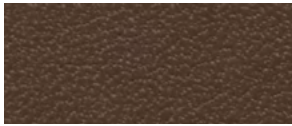
BL 1902



BL 1923



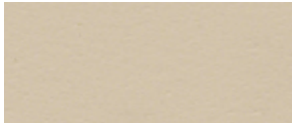
BL 1901



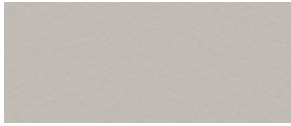
BL 1925



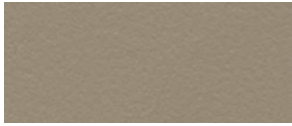
BL 1914



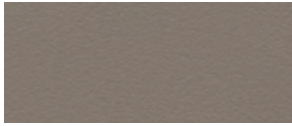
BL 1919



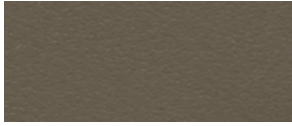
BL 1916



BL 1920



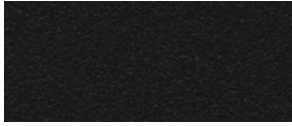
BL 1918



BL 1917



BL 1915



BL BLCK