

The art of Laser Engraving or Laser Etching is used to create intricate patterns and designs predominately on materials such as wood and glass. Spinneybeck now extends this design capability to its Leather Tiles, Belting Leather, Leather Wall Panels and Magnetic Leather.

Laser Engraved leather combines the beauty and warmth of a natural product with the precise detailing allowed by laser technology. The result is an unlimited combination of leather colors, shapes and sizes punctuated by creative designs. Laser engraving provides unique focal points and accents for all types of interior spaces. Custom artwork can range from tiled murals to borders on placemats. Corporate names or logos engraved in leather walls, counters, desk tops and even portfolios create an unexpected and sophisticated advertising opportunity for restaurants, hotels, casinos and sporting venues.

In addition, Spinneybeck offers six standard patterns available on Leather Tiles, Belting Leather, Leather Wall Panels and Magnetic Leather. Genevieve Bennett, a London-based designer with extensive experience in leather wall coverings, collaborated with Spinneybeck to create four patterns for the standard collection. The Fold, Fan Flower, Ribbon and Loop are exclusive to the Spinneybeck Laser Engraved program.

Standard Patterns

Fold



Fleur de Lis Outline



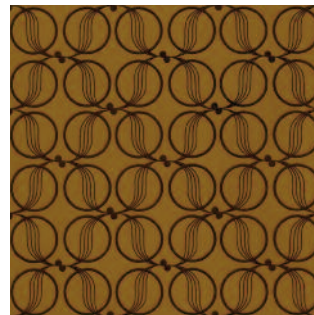
Ribbon



Fan Flower



Fleur de Lis Full Engrave



Loop

Please contact Customer Sales Service or your Spinneybeck Sales Representative for information on samples, pricing and lead times.