

The beauty of Spinneybeck leather combined with the dimension and texture of weaving create truly unique covering for upholstery and architectural applications, such as wall panels.

Leatherweave is produced using various leather styles resulting in an elegant, unusual and sophisticated product.

In-Stock Program

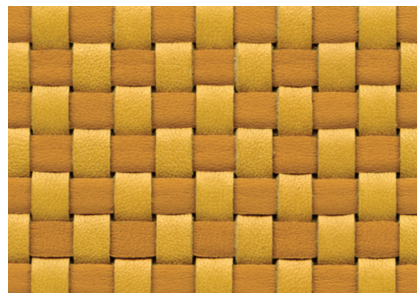
Spinneybeck offers two Leatherweave programs. Our in-stock program features 24 colors in two different styles. Single colors are available in various textures including pearlized, sueded and four patent leathers. The standard width is 96 centimeters and the leathers strips are 5 mm. The maximum length of in-stock Leatherweave is 24 linear meters per roll. The collection also includes three exclusive patterns designed by noted textile designer Elizabeth Whelan. These designs combine multiple leather styles and colors. Two patterns are offered at a 65.58 cm width and one pattern is stocked in the standard 96.52 cm width. All weaves ship with a cotton backer which is applied for stability. The minimum order quantity for in-stock Leatherweave is 1.7 square meters.

Custom Program

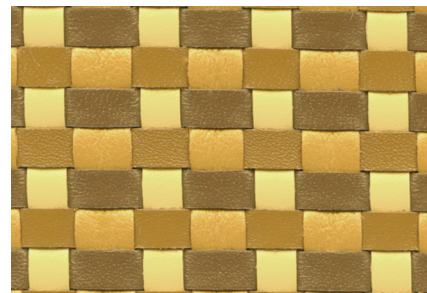
Any of Spinneybeck's leather styles may be used to create custom Leatherweave patterns. Woven patterns may include up to three leather colors and a combination of textures is also possible. Leatherweave is available in widths of 69 cm, 91 cm and 96 cm. The standard strip width is 5 mm and 7mm strip width is available upon request. The maximum length of custom Leatherweave is 24 linear meters per roll. A cotton backer in black or off-white is applied for stability. A minimum quantity of 1.7 square meters is required for a custom order. Since this is a custom product, the tannery will produce an overrun of 5%-10% to guarantee no shortages. The lead-time for custom Leatherweave is 6-8 weeks.



One color Leatherweave



Two color Leatherweave



Three color Leatherweave