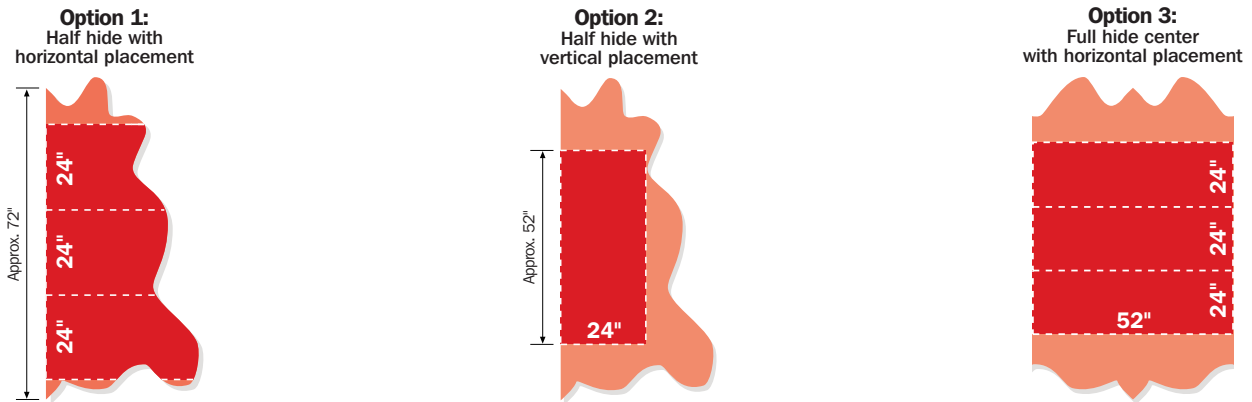


Embossed Leather

Fact Sheet

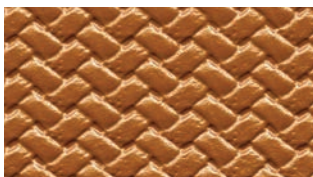
With the addition of an embossed pattern, leather can be transformed into a truly unique product for upholstery and architectural applications. We recommend a selection of Spinneybeck leathers that best accept and retain the embossing process due to their raw material and unique tannage. Leathers most suitable for embossing are: Amazon (AM), Belting Leather (BL), Derby (DE), Ducale (DL), Distressed (DT), Forte (FE), Hand Tipped (HT), Leather Tiles (FT), Lucente (LU), Maremma (MM), Portofino (PT), Saddle (SL) and Salon (SN).

The minimum order for the embossing process is one half hide and pricing is based on hide size. Maremma hides average 18 sq. ft. and generally only require one application of the embossing plate. Standard placement options using an average 50 sq. ft. hide are shown in the diagrams below:



The usable area is approximately 24" x 52" and matchlines are often visible. Please confirm all pattern sizes with Spinneybeck Customer Sales Service prior to placing an order.

Embossed patterns are available in a wide range of styles inspired by nature, old world tooling, weaving and geometrics. Samples are available in the following ten patterns in FE4010, LU1606, MM1703 and SL68:



Basket Weave 5565



Cobra 3



Deep Small Weave



Dream Weave



Empire Alligator



Large Weave



Milano Weave



Quilty Diamond



Rosette



Small Belly Gator

Custom embossed samples are available upon request. Please see our Special Services Price List for additional information.

Spinneybeck • 425 CrossPoint Parkway • Suite 100 • Getzville, New York 14068 U.S.A.

(800) 482-7777 / (716) 446-2380 / (716) 446-2396 Fax / www.spinneybeck.com