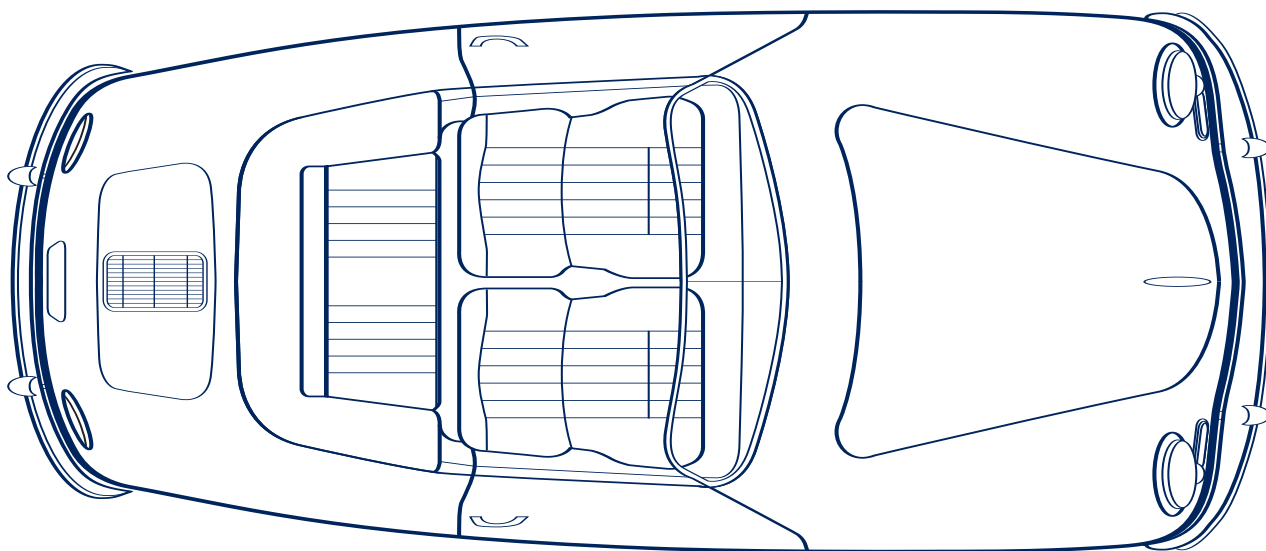


# Spinneybeck

CLASSIC CAR LEATHERS

**PORSCHE 356 • 911 • 912**  
**1950 - 1973**



# PORSCHE LEATHER GUIDE

THE FOLLOWING GUIDE IS BASED ON ACCUMULATED HISTORICAL DATA AND IS AS ACCURATE AS REASONABLY POSSIBLE.

PORSCHE COLOR	PORSCHE CODE	SPINNEYBECK CODE	MODEL 356			MODEL 356A		MODEL 356B		MODEL 356C	MODEL 911 and 912		
			1950-52	1953	1954-55	1956	1957-58	1960-61	1962-63	1964-65	1966-69	1970-71	1972-73
Red	002	VP 512			●	●	●				●	●	●
Red, Dk.	000	VP 555	●	●	●	●	●	●	●	●	●		
Blue	300	VP 537	●	●	●			●	●	●			●
Grey	600	VP 536	●	●	●	●		●	●	●			
Beige	500	VP 531	●	●	●	●	●						
Tan	400	VP 532						●	●	●			
Fawn	405	VP 533								●	●	●	●
Brown, Lt.	406	VP 515									●	●	●
Brown, Md.	402	VP 210		●			●	●	●	●	●	●	●
Brown, Dk.	93	VP 534										●	●
Green	91	VP 535	●	●	●	●	●		●	●			
Black		VP BLK		●			●	●	●	●	●	●	●



VP BLK

## VELLUTO PELLE SPECIFICATION

Velluto Pelle is a lightly enhanced aniline dyed leather. The subtle enhancement process refines the surface of the leather without penetrating the dermis of the hide. The combination of the light surface enhancement and special ironing process creates the suppleness and smoothness of Velluto Pelle.

*Average hide size: 50–55 sq. ft.*

*Average thickness: 1.0–1.1 mm*

*Weight: 2.50–2.75 oz. per square foot*

## SPINNEYBECK COLORS THAT MATCH ORIGINAL PORSCHE COLORS



VP 531



VP 532



VP 533



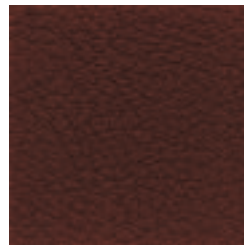
VP 515



VP 512



VP BLK



VP 555



VP 210



VP 537



VP 535

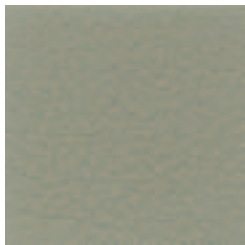


VP 536

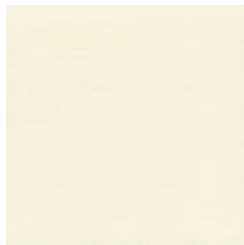


VP 534

## POPULAR SPINNEYBECK COLORS FOR AUTOMOTIVE RESTORATION



AD 6001



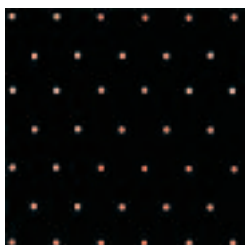
AD 6006



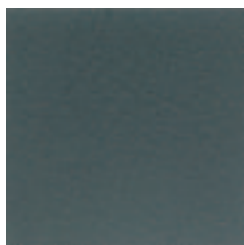
VP 04



VP 06



PERFORATED 560



VP 559



AD 6022



AD 6021

# Spinneybeck

Spinneybeck is the world's leading supplier of quality full grain upholstery leathers. We have been in business for over forty years supplying leather for a variety of interior applications from residential interiors to luxury yachts to business jets to automotive restoration clients.

We continue our commitment to the automotive restoration market with this carefully researched introduction of historical Porsche interior leathers. This Porsche collection, along with our Rolls Royce/ Bentley Classic Car Leathers, are just a sampling of the many products available from Spinneybeck. Our inventory of approximately 2.5 million square feet includes 25 styles and over 800 colors. Custom colors are always available.

## Research Credits

A special thank you to John and Ray Paterek of Paterek Brothers in Chatham, New Jersey and Brad Ripley of NLA Limited in Reno, Nevada for their assistance with historical color research. Paterek Brothers provided Porsche dealer sample books from the 1950's and 1960's. These books contained original Porsche leather samples that allowed Spinneybeck to match grain texture and color. While there is some color variation from year to year in the standard Porsche colors offered, we have made every effort to accurately duplicate the original color.

Spinneybeck

425 CrossPoint Parkway, Suite 100 • Getzville, New York 14068, U.S.A. (716) 446-2380 • (716) 446-2396 Fax  
www.spinneybeck.com | 800-482-7777