



Overlap Wrap

Handrail

spinneybeck



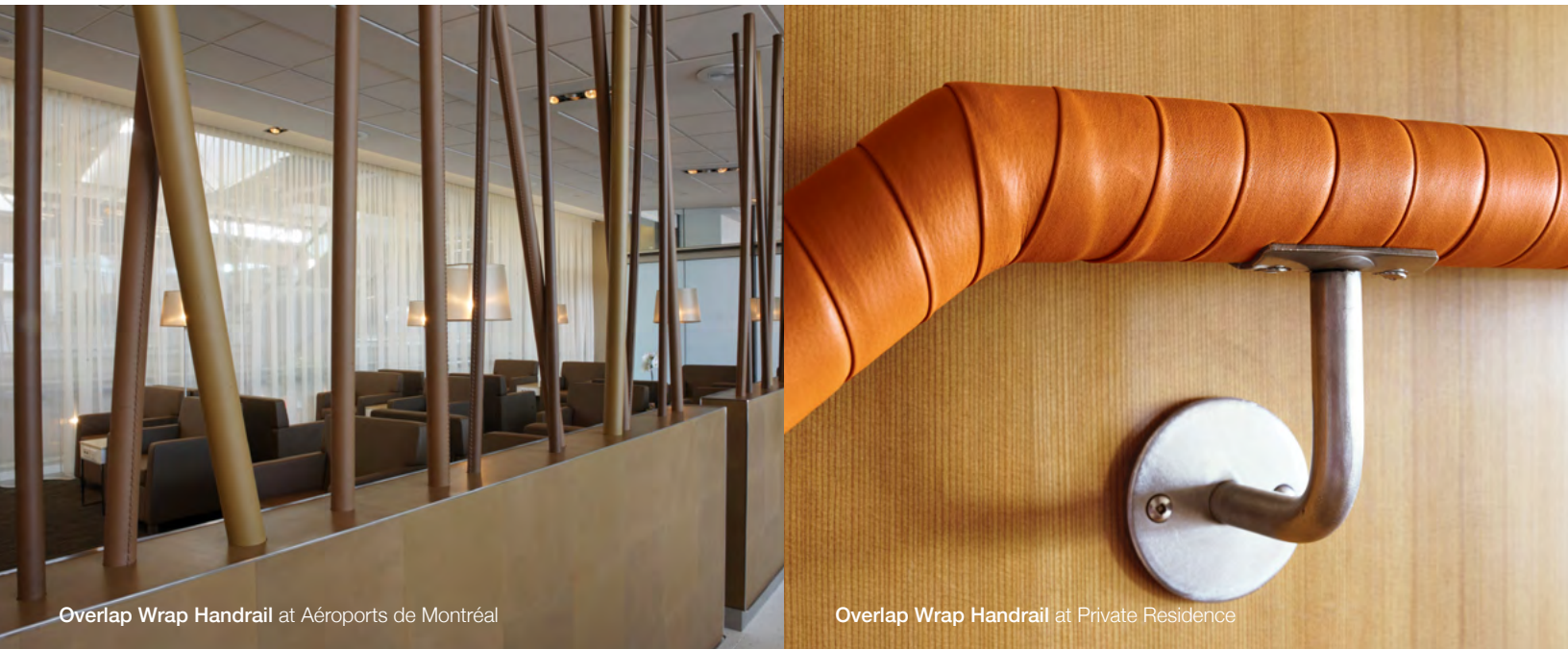
Overlap Wrap Handrail at Private Residence

Overlap Wrap Handrail is bespoke elegance.

Overlap Wrap Handrails provide a distinctive, bespoke aesthetic for any stair, elevator, and door hardware. Originating in Europe, the craft of wrapping handrails in leather is an art form and the overlap wrap emphasizes the handcraftsmanship of these rails. The leather is cut in 3/4 to 1 in (2 to 2.5 cm) wide strips, shaved, and turned at the edges to allow for overlapping. The leather strips are then adhered to the handrail substrate. Customizable options include substrate material, leather type, and leather or stainless steel end caps.



Overlap Wrap Handrail at Greystar Partners



Overlap Wrap Handrail at Aéroports de Montréal

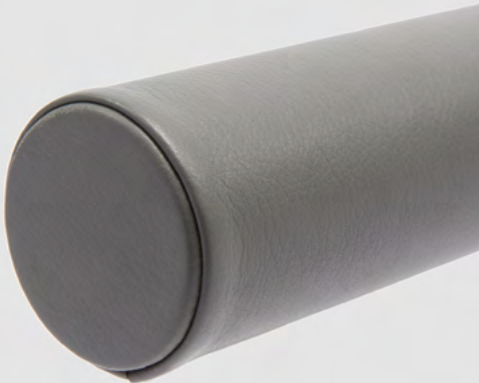


Overlap Wrap Handrail at Private Residence



Overlap Wrap Handrail

End Cap Options

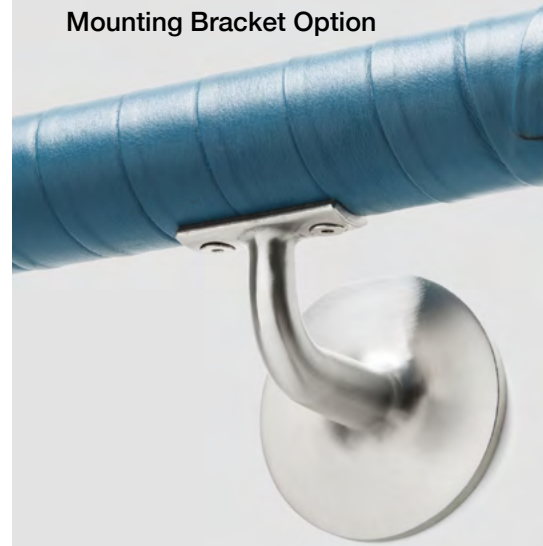


Leather (shown in Flat Wrap Handrail)



Stainless Steel (shown in Flat Wrap Handrail)

Mounting Bracket Option



Stainless Steel

Product	Overlap Wrap Handrail
Covering Content	European cowhide
Substrate Options	1 3/4 in (4.5 cm) dia. Aluminum 1 1/4 in (3.2 cm) dia. Stainless steel 1 3/4 in (4.5 cm) dia. Stainless steel
End Cap Options	Leather or Stainless steel
Mounting Bracket Option	Stainless steel
Length	Standard pricing applies to straight handrails of 10 lin ft (3 lin m) or more. Shorter lengths and any bends or curves must be quoted.
Maintenance	For finished leathers, wipe with a cool, damp cloth. For tougher soiling, use a pH-balanced soap such as Dawn with a 1:10 ratio of soap to water and rinse. Repeat, if needed. Occasional use of Spinneybeck Finished Leather Cleaner, Conditioner & Protector is recommended. For naked (aniline) leathers, wipe entire surface with a soft cloth and cool water to even out any abrasions or stains. Do not spot rub, for it will darken only that area. Occasional use of Spinneybeck Aniline Leather Cleaner, Conditioner & Protector is recommended. Other leather cleaners such as saddle soap or household cleaners that may contain harsh chemicals, alcohol or ink removers should never be used.
Lead Time	Made to order and certain lead times will apply
Installation	Handrails should be fabricated off-site by an experienced metal fabricator or fabricated and manufactured by Spinneybeck. Installation services available through Spinneybeck.
Custom	Embossed or perforated leather and curved rails must be quoted

Standard Leathers

Available in the full color range of each leather below—refer to Color Book or spinneybeck.com/color-book for complete color selection. (Swatches shown to indicate grain texture only.)

