


# Marissa

Upholstery Leather

spinneybeck





**Marissa is  
positively  
sumptuous.**

Marissa evokes texture and a sumptuously soft surface. The special retannage perfects the hand of this luxurious leather, as well as prepares the material for the full, rich dye penetration. Marissa is dyed twice as the second bath deepens the color and further enriches the leather. The velvet-like face of Marissa is protected by an impregnated soil-resistant treatment, which shields the surface without disturbing the suppleness and drape of this elegant leather.





### **Sumptuously Soft**

A special retannage perfects the hand of this luxurious sueded leather that provides an elegant drape and softness.

### **Full Grain All the Way**

Hides sourced from Italy, Southern Germany, and Denmark provide a high quality surface which does not need to be altered to conceal flaws.

### **Soil Resistant**

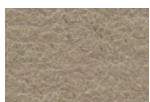
Marissa is unexpectedly soil resistant with an impregnated soil and water resistant treatment.

### **Wear In Verses Wear Out**

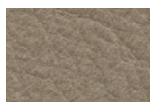
This naked leather features all the characteristics of natural leather and will develop a beautiful patina with age and usage.

<b>Product</b>	Marissa (MA)
<b>Content</b>	European cowhide
<b>Origin</b>	Italy
<b>Hide Size</b>	50–55 sq ft (4.6–5.1 sq m)
<b>Thickness</b>	1.0–1.1 mm
<b>Weight</b>	2.5–2.75 oz / sq ft (763–839 g / sq m)
<b>Grain</b>	Full
<b>Grain Texture</b>	Smooth sueded
<b>Tannage</b>	Chrome
<b>Dye</b>	Aniline
<b>Finish</b>	Naked, soil resistant
<b>Primary Uses</b>	Upholstery, handrails, wall panels, architectural applications
<b>Industry</b>	Automotive, contract, hospitality, marine, residential
<b>Maintenance</b>	Smooth sueded leather can be maintained with reasonable care as liquids will bead allowing spillage to be blotted up immediately. Dry brush occasionally and general soiling may be removed with a suede cleaning block. Leather cleaners such as saddle soap or household cleaners that may contain harsh chemicals, alcohol or ink removers should never be used.
<b>Custom</b>	Custom colors not available
<b>Special Services</b>	Perforated available with an upcharge
<b>Variation</b>	Color variation of naked leathers may be more pronounced beyond the normal commercial range. A Cutting for Approval (CFA) is required for all orders.
<b>Colorfastness to Light</b>	Class 2–3
<b>Colorfastness to Crocking</b>	Class 2–3 (dry)
<b>Flammability</b>	CAL 117: Pass CAL 133: Successfully used in CAL 133 applications with Firegard F187 fire backer material or equivalent (flame treated) Cigarette Ignition Resistance NFPA 260: Class 1
<b>Durability + Strength</b>	Abrasion ASTM D 7255: n/a Breaking Force ASTM D 2208: 125 lb Elongation ASTM D 2211: 30–50% at 50 lb Flex ASTM D 2097: n/a Tearing Strength ASTM D 4705: 15 lb

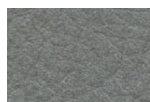
#### Standard Colors



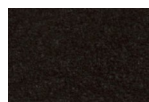
MA 4492



MA 4416



MA 4450



MA BLACK