


# Maremma

Upholstery Leather

spinneybeck

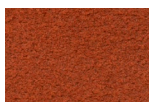


**Maremma is an aniline  
dyed, textured suede.**

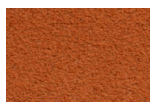
The premium select hides required to produce Maremma originate from northern Italy and Switzerland. High quality dyes provide excellent lightfastness and allow a greater saturation and the luxurious surface is complemented by the enriched coloration of two dye baths. The sueded surface is protected by an impregnated, soil resistant treatment which shields the surface without disturbing the suppleness and beauty of this fine leather. Maremma offers a price sensitive alternative to the grain sueded leathers.

<b>Product</b>	Maremma (MM)
<b>Content</b>	European cowhide
<b>Origin</b>	Italy
<b>Hide Size</b>	18–22 sq ft (1.7–2.0 sq m)
<b>Thickness</b>	1.2–1.3 mm
<b>Weight</b>	3.0–3.25 oz / sq ft (915–992 g / sq m)
<b>Grain</b>	Full
<b>Grain Texture</b>	Textured sueded
<b>Tannage</b>	Chrome
<b>Dye</b>	Aniline
<b>Finish</b>	Naked, soil resistant
<b>Minimum</b>	Full hide
<b>Primary Uses</b>	Upholstery, handrails, wall panels, architectural applications
<b>Industry</b>	Automotive, contract, hospitality, marine, residential
<b>Maintenance</b>	Textured sueded leather can be maintained with reasonable care as liquids will bead allowing spillage to be blotted up immediately. Brush occasionally with a scouring pad followed by vacuuming to remove dirt and loose fibers. Leather cleaners such as saddle soap or household cleaners that may contain harsh chemicals, alcohol or ink removers should never be used.
<b>Custom</b>	Custom colors not available
<b>Special Services</b>	Perforated available with an upcharge
<b>Variation</b>	Color variation of naked leathers may be more pronounced beyond the normal commercial range. A Cutting for Approval (CFA) is required for all orders.
<b>Colorfastness to Light</b>	Class 2–3
<b>Colorfastness to Crocking</b>	Class 2–3 (dry)
<b>Flammability</b>	CAL 117: Pass CAL 133: Successfully used in CAL 133 applications with Firegard F187 fire backer material or equivalent (flame treated) Cigarette Ignition Resistance NFPA 260: Class 1
<b>Durability + Strength</b>	Abrasion ASTM D 7255: n/a Breaking Force ASTM D 2208: 175 lb Elongation ASTM D 2211: 30–50% at 50 lb Flex ASTM D 2097: n/a Tearing Strength ASTM D 4705: 25 lb

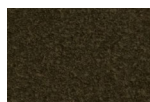
#### Standard Colors



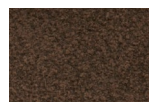
MM 1706



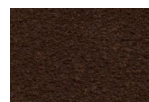
MM 1709



MM 1714



MM 1711



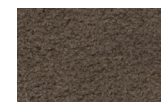
MM 1701



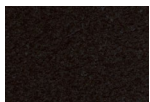
MM 1703



MM 1715



MM 1708



MM BLCK