

A close-up photograph of a horse's hide, showing a mix of dark brown and light tan hairs. The hair is long and fine, creating a dense, textured appearance. The lighting is soft, highlighting the individual strands and the overall sheen of the coat.

Haired Hide

Upholstery Leather

spinneybeck



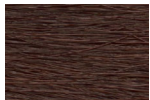
Haired Hide is authentic and versatile.

Haired Hide is a cowhide that has been tanned only to soften the hair left intact. Among the color selection is Tri-Color (brown, black, and white) which reveals unique, natural markings that are one-of-a-kind. Haired Hides are versatile as they can be used as upholstery or a sophisticated and natural floor covering option. Each luxurious hide is unique in color, size, and feel.

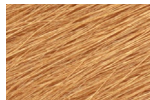


Product	Haired Hide (HH)
Content	European cowhide
Origin	Italy
Hide Size	45–55 sq ft (4.2–5.1 sq m)
Thickness	1.5–1.6 mm
Weight	3.75–4.0 oz / sq ft (1144–1221 g / sq m)
Grain	Hair intact
Grain Texture	Chrome
Tannage	Full hide
Dye	Upholstery, rugs, architectural applications
Finish	Contract, hospitality, residential
Primary Uses	Upholstery, handrails, wall panels, architectural applications
Industry	Contract, hospitality, marine, residential
General Maintenance	Vacuum regularly with a brush attachment and spot clean with lukewarm water and mild soap. The surface of the haired hide should never be soaked. Leather cleaners such as saddle soap or household cleaners that may contain harsh chemicals, alcohol or ink removers should never be used.
Floor Covering Maintenance	Rotate rug every so often for even wear. To clean up shed hairs, use a broom or vacuum set at maximum height. Maintain with regular dusting and spot cleaning with lukewarm water and mild soap or occasional use of Spinneybeck leather maintenance products. Other leather cleaners, such as saddle soaps or household cleaners that may contain harsh chemicals, alcohol, or ink removers should never be used.
Custom	Custom colors not available
Variation	Color variation will be more pronounced beyond the normal commercial range. A Cutting for Approval (CFA) is required for all orders.
Colorfastness to Light	Class 2–3
Flammability	CAL 117: Pass CAL 133: Successfully used in CAL 133 applications with Firegard F187 fire backer material or equivalent (flame treated) CFR 16 Part 1630/1631: Pass (flame treated)
Durability + Strength	Breaking Force ASTM D 2208: 200 lb Elongation ASTM D 2211: 30–50% at 50 lb Tearing Strength ASTM D 4705: 25 lb

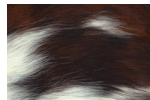
Standard Colors



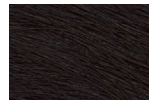
HH 0A12



HH 0CP5



HH 3COL



HH BLCK